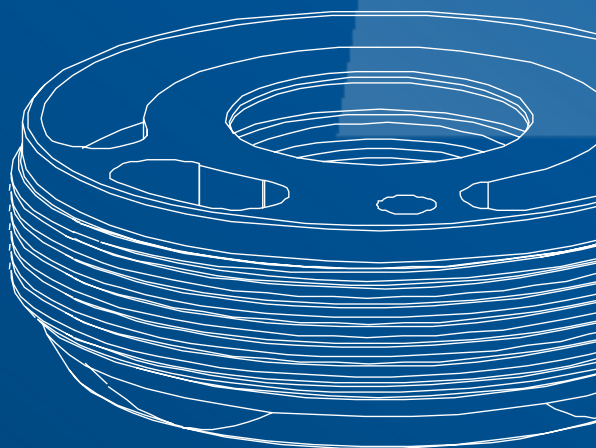
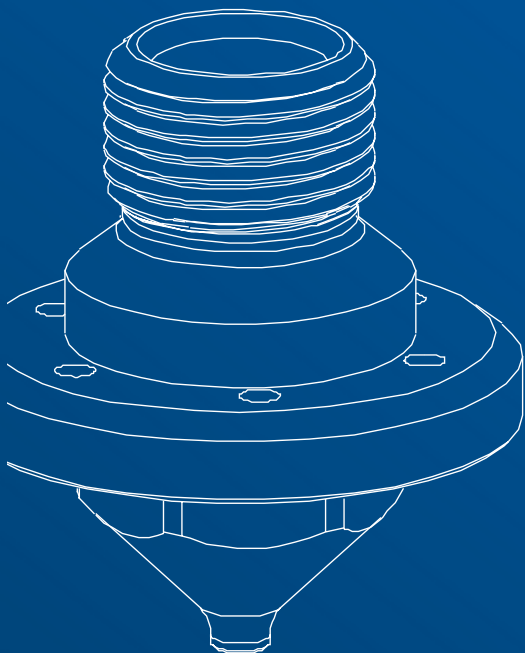


# 50TH.2 HVLP series

mod. 50TH.2 HVLP, 50TH.2 HVLP-Q-X, 50TH.2 HVLP-QS-X

## Spare parts and components

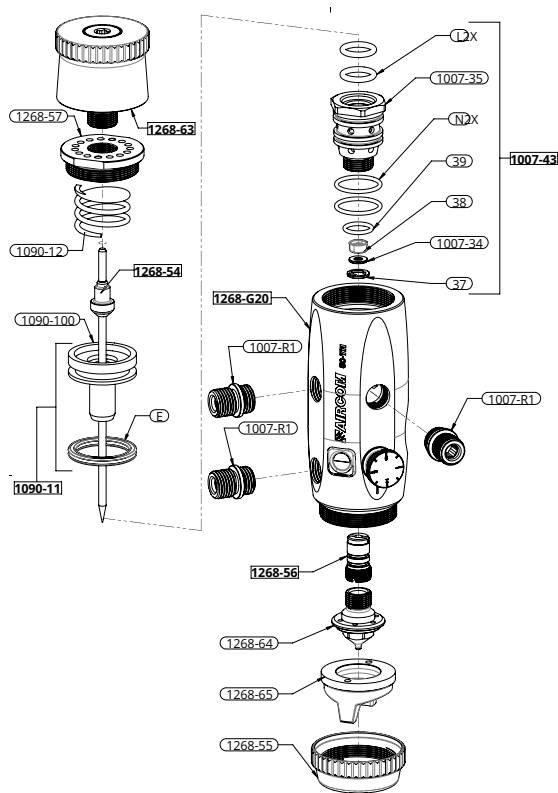


## SPARE PARTS

### DETAILS LIST

- 37 [x1] Seeger
- 38 [x1] Gasket
- 39 [x1] Gasket
- 1007-34 [x1] Gasket cover ring
- 1007-35 [x1] Valve
- 1007-43 [x1] Mounted valve
- 1090-11 [x1] Mounted plunger
- 1090-12 [x1] Spring
- 1090-100 [x1] Plunger
- 1268-54 [x1] Complete needle
- 1268-55 [x1] Ferrule
- 1268-56 [x1] Gasket kit
- 1268-57 [x1] Cap
- 1268-63 [x1] Mounted hand wheel
- 1268-64 [x1] Nozzle
- 1268-65 [x1] Head
- 1268-G20 [x1] Body with brass inner bushing, adjusting screw and cap
- E [x1] Gasket
- L [x2] Gasket
- N [x2] Gasket
- 1007-R1 [x3] Junction

### mod. 50TH.2 HVLP



### NOTES

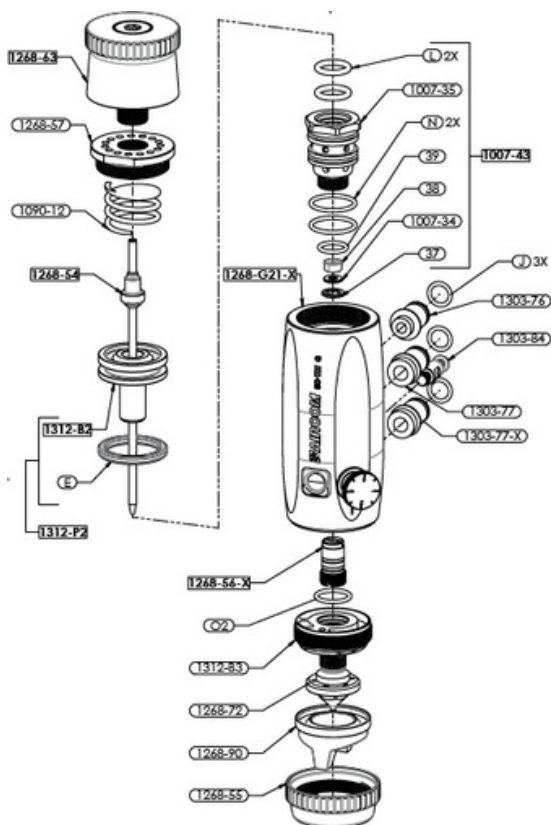
The head protection stopper is also available as a spare part.  
You can refer to the CNN table below for compatible heads for your model.

# SPARE PARTS

## DETAILS LIST

- 37 [x1]Seeger
- 38 [x1]Gasket
- 39 [x1]Gasket
- 1007-34 [x1]Gasket cover ring
- 1007-35 [x1]Valve
- 1007-43 [x1]Mounted valve
- 1090-12 [x1]Spring
- 1268-54 [x1]Complete needle
- 1268-55 [x1]Ferrule
- 1268-56-X [x1]Stainless steel gasket kit
- 1268-57 [x1]Cap
- 1268-63 [x1]Mounted hand wheel
- 1268-72 [x1]Nozzle
- 1268-90 [x1]Head
- 1268-G21-X [x1]Body with stainless steel inner bushing, adjusting screw and cap
- 1303-76 [x1]Junction
- 1303-77 [x1]Junction
- 1303-77-X [x1]Junction in stainless steel
- 1303-84 [x1]Locking pin
- 1312-B2 [x1]Plunger
- 1312-B3 [x1]Insert
- 1312-P2 [x1]Mounted plunger
- E [x1]Gasket
- J [x3]Gasket
- L [x2]Gasket
- N [x2]Gasket
- O2 [x1]Gasket

## mod. 50TH.2 HVLP-Q-X



## NOTES

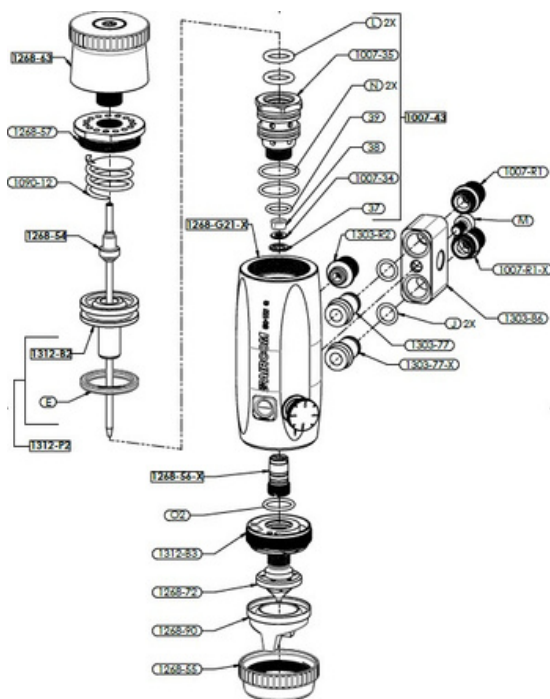
The head protection cap is also available as a spare part.  
 For the heads compatible with the model you can refer to the CNN table below.  
 The cap foreseen by default in part. [1268-G21-X] can be replaced with a fitting for the washing circuit.

# SPARE PARTS

## DETAILS LIST

- 37 [x1] Seeger
- 38 [x1] Gasket
- 39 [x1] Gasket
- 1007-34 [x1] Gasket cover ring
- 1007-35 [x1] Valve
- 1007-43 [x1] Mounted valve
- 1007-R1 [x1] Junction
- 1007-R1-X [x1] Stainless Steel Junction
- 1090-12 [x1] Spring
- 1268-54 [x1] Complete needle
- 1268-55 [x1] Ferrule
- 1268-56-X [x1] Stainless steel gasket kit
- 1268-57 [x1] Cap
- 1268-63 [x1] Mounted hand wheel
- 1268-72 [x1] Nozzle
- 1268-90 [x1] Head
- 1268-G21-X [x1] Body with stainless steel inner bushing, adjusting screw and cap
- 1303-77 [x1] Junction
- 1303-77-X [x1] Junction
- 1303-86 [x1] Block
- 1303-R2 [x1] Junction
- 1312-B2 [x1] Plunger
- 1312-B3 [x1] Insert
- 1312-P2 [x1] Mounted plunger
  - E [x1] Gasket
  - J [x3] Gasket
  - L [x2] Gasket
  - M [x1] TCEI Screw
  - N [x2] Gasket
  - O2 [x1] Gasket

## mod. 50TH.2 HVLP-QS-X



### NOTE

The head protection cap is also available as a spare part.


For the heads compatible with the model you can refer to the CNN table below.

The cap foreseen by default in part. [1268-G21-X] can be replaced with a fitting for the washing circuit.

## COMPATIBLE CNN

Cap-Nozzle-Needle

**mod. 50TH.2 HVLP**

1268-65-EI	CAP	NOZZLE	NEEDLE
	1268-65-EI-0.8	1268-64-0.8	1268-54-0.8
	1268-65-EI-1.0	1268-64-1.0	1268-54-1.0
	1268-65-EI-1.2	1268-64-1.2	1268-54-1.2
	1268-65-EI-1.5	1268-64-1.5	1268-54-1.5



for flow rates up to 500 gr/min

1268-65-FI	CAP	NOZZLE	NEEDLE
	1268-65-FI-1.2	1268-64-1.2	1268-54-1.2
	1268-65-FI-1.5	1268-64-1.5	1268-54-1.5
	1268-65-FI-1.8	1268-64-1.8	1268-54-1.8




for flow rates from 500 gr/min up to 800 gr/min

## COMPATIBLE CNN


Cap-Nozzle-Needle

**mod. 50TH.2 HVLP**

1268-65-GI	CAP	NOZZLE	NEEDLE
	1268-65-GI-1.8	1268-64-1.8	1268-54-1.8

for flow rates over 800 gr/min

**mod. 50TH.2 HVLP-Q-X, 50TH.2 HVLP-QS-X**

1268-90-EA	CAP	NOZZLE	NEEDLE
	1268-90-EA-0.8	1268-72-0.8	1268-54-0.8
	1268-90-EA-1.0	1268-72-1.0	1268-54-1.0
	1268-90-EA-1.2	1268-72-1.2	1268-54-1.2
	1268-90-EA-1.5	1268-72-1.5	1268-54-1.5

for flow rates up to 500 gr/min

## CERTIFIED QUALITY

### CERTIFICATIONS

All AIRCOM® products are certified according to norm EN 13 966 - 1 (VDMA-Einheitsblatt 24 366) and therefore also according to transfer efficiency parameters.



### THREE-COLOR INSERT

Each gun is marked with a three-color three-dimensional seal. It represents an additional guarantee of authenticity and Italianity because it is present exclusively in original AIRCOM® guns.



## SUPPORT

### DO YOU NEED HELP?

We are at your disposal.



+39 0124 5154 44



[aircom@aircom.it](mailto:aircom@aircom.it)



Online support





AIRCOM



DISCOVER ALL PRODUCTS



[aircom.it](http://aircom.it)

Follow us

