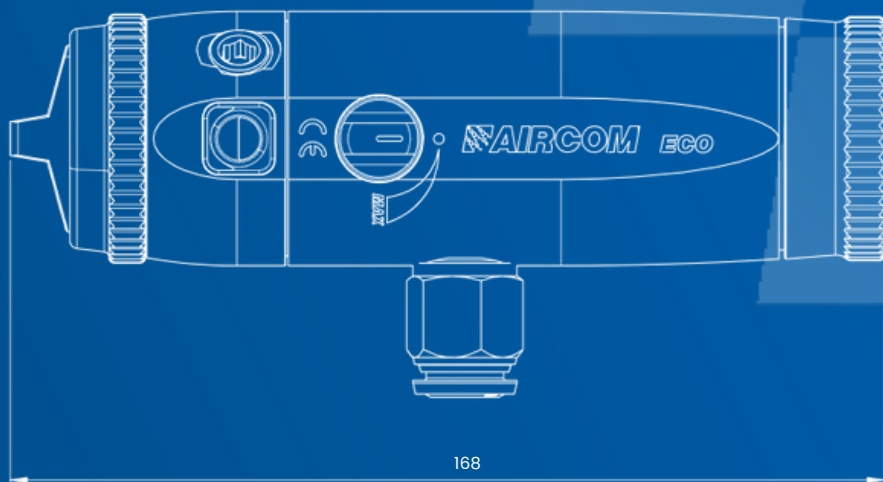


Instruction manual



mod. ECO-X, ECO-A-X

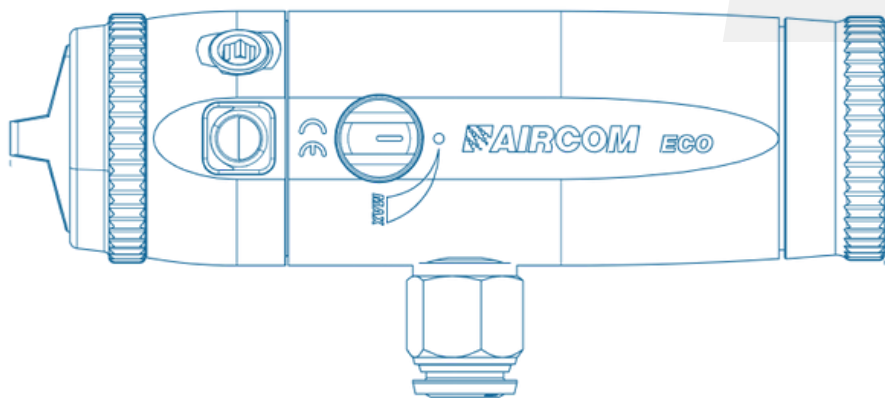
AVAILABLE MODELS

mod. ECO-X

Stainless steel internal passages
Presence of optional washing circuit

mod. ECO-A-X

Possibility of remote fan adjustment



Index

Instruction Manual

Warnings	.04
Maintenance and cleaning	.04
Installation and start-up	.05
Technical data	.08
Troubleshooting	.10
Spare parts and components	.11
Certified quality	.14
Support	.14



WARNINGS!

Carefully read and follow all instructions and safety precautions before using the product.



MANUALS

Our manuals are available at aircom.it/en/support/manuals/
Or, by scanning the QR Code on this page.

WARNINGS

CORROSIVE WARNINGS

Our guns can be used with the majority of water, or solvent-based pigments for coating and finishing all types of surfaces. However, they are not designed to spray abrasive and/or corrosive products. If abrasive and/or corrosive products are used, guns with components made of the appropriate material can be ordered.

PRODUCT

HEALTH HAZARD

Some chemicals, once sprayed, may be harmful and cause irritation or health disorders. Careful reading of all labels and instructions on how to use the product are necessary. Use of the product is restricted to trained technical personnel, with the use of special safety glasses when adjusting the gun and, while the system is operating.

MAINTENANCE AND CLEANING

MAINTENANCE

Before any maintenance work, empty the gun and disconnect it from both, the compressed air supply, and the liquid supply. Use only original AIRCOM® accessories, spare parts, and related components: any other product not supplied by AIRCOM® is not approved or authorized. AIRCOM® is not liable for any damage caused by using non-original spare parts and accessories.

CLEANING

Use exclusively appropriate liquid cleaners with neutral pH 6-8. Do not use acids, alkaline solutions or other cleaning agents containing sodium hydroxide, which are aggressive for cleaning the exterior of the gun. Do not immerse the gun in liquid cleaners that may cause corrosion of the product. Clean all material passages by propagating water within the paint circuit: inadequate cleaning can cause damages to the fan shape. While cleaning, avoid scratching the surfaces of the air nozzle holes and the dipstick.

INSTALLATION

TECHNICAL SPECIFICATIONS

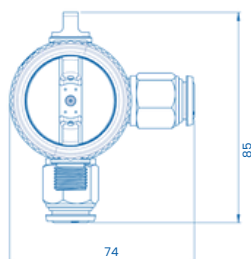
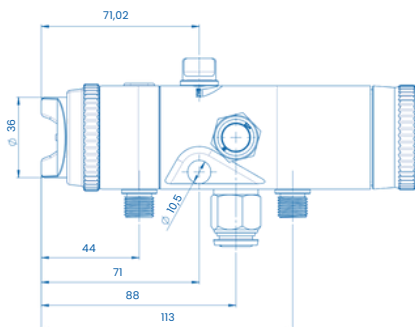
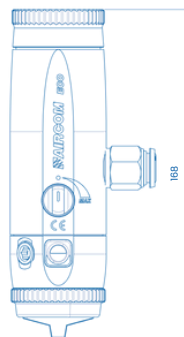
Connection hole diameter: 10,5 mm.

Size of pipe junctions:

- Control air inlet: **A** = $\frac{1}{4}$ gas
- Atomizing air inlet: **B1** and **B2** = quick coupling pipe $\varnothing 12$ mm
- Product inlet: **C** = $\frac{1}{4}$ gas

Gun weight: 0,95 kg

Gun size: see dimensioned views



VIDEO TUTORIALS ►

Our video tutorials are available at aircom.it/en/support/tutorials/
Or, by scanning the QR Code on this page.



INSTALLATION AND STARTUP

Before using a new gun or a new product, clean the gun thoroughly with an appropriate solvent. Powering should be done with dry, filtered air and regulated to constant pressure.

DIRECTIONS FOR GUN OPERATION

A

Pipe Ø ext. X Ø int. = 8 X 6
Plunger opening $\geq 4,0$ bar

B1

Pipe Ø ext. X Ø int. = 12 X 10
Atomization: from 0,5 to 3,0 bar

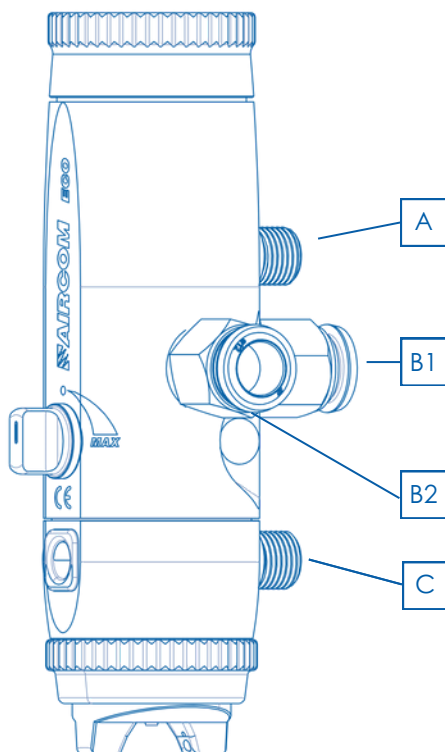
B2

Pipe Ø ext. X Ø int. = 12 X 10
Atomization: from 0,5 to 3,0 bar

C

Pipe Ø ext. X Ø int. = 8 X 6
Product inlet

To obtain a lower operating pressure and less overspray, we recommend using the **second air inlet pipe with the B2 fitting** (part. R4).



ADJUSTMENT SEQUENCE

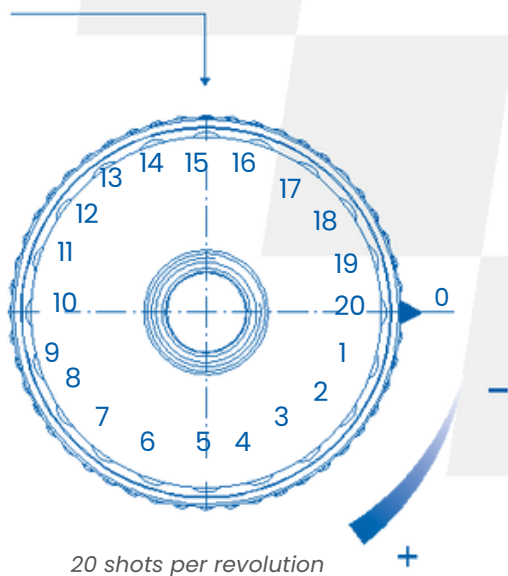
1. Lock the gun to the system using the fastening bracket and orient the head towards the appropriate coverage direction.

2. Connect the atomization air, control air and product piping to the junctions shown on the previous page.

3. Screw the handwheel part. [1331-C9] as far as it will go (do not force when reaching the stop). Act on the control air. If no drop of pigment comes out, remove the control air, and open the handwheel part. [1331-C9] with one click. Repeat the process until the first drop appears.

4. Open the handwheel part. [1331-C9] with the necessary clicks to determine the desired amount of pigment.

5. Act on the adjustment screw to obtain the desired atomization range.
If using the ECO-A-X, act remotely to adjust the fan.



TECHNICAL DATA

HEAD 1331-C5-LA

HEAD Ø NOZZLE	SHOTS	FLOW RATE OF THE FLUID (g/min)	ATOMIZATION PRESSURE (kg/cm²)	AIR CONSUMPTION (l/min)
1331-C5-LA Ø 0,8	7	108	0,4	215
	10	162	0,45	228
1331-C5-LA Ø 1,0	8	146	0,55	242
	12	195	0,5	247
1331-C5-LA Ø 1,2	8	201	0,5	240
	13	317	0,6	275
1331-C5-LA Ø 1,5	10	303	0,6	271
	15	454	0,9	367

NOTES

Pump pressure 0.8 to 1.0 Kg/cm².
Liquid used for testing: water. Ford cup viscosity 4 = 11 sec.

TECHNICAL DATA





HEAD 1331-C5-NA

HEAD Ø NOZZLE	SHOTS	FLOW RATE OF THE FLUID (g/min)	ATOMIZATION PRESSURE (kg/cm ²)	AIR CONSUMPTION (l/min)
1331-C5-NA Ø 0,8	7	108	0,35	188
	10	162	0,5	224
1331-C5-NA Ø 1,0	8	146	0,45	203
	12	195	0,6	243
1331-C5-NA Ø 1,2	8	201	0,65	289
	13	317	0,8	317
1331-C5-NA Ø 1,5	10	303	0,8	320
	15	454	1,0	371

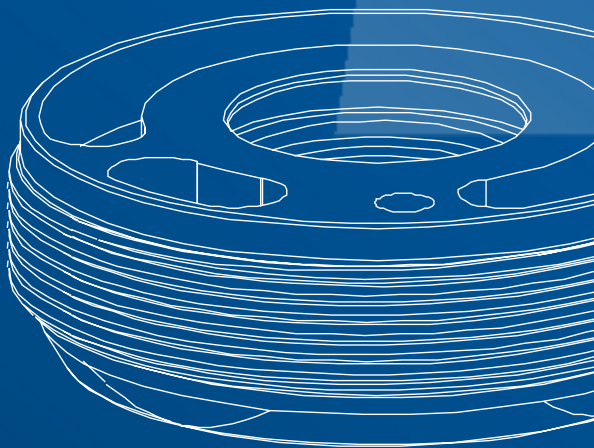
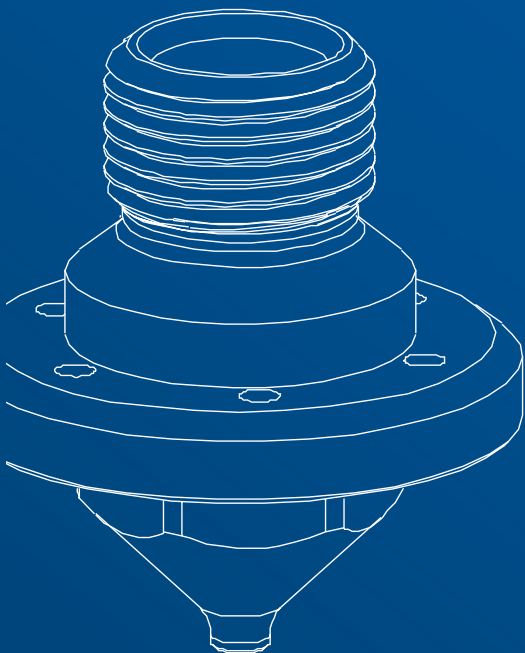
NOTES

Pump pressure 0.8 to 1.0 Kg/cm².
Liquid used for testing: water. Ford cup viscosity 4 = 11 sec.

TROUBLESHOOTING

Anomaly	Problem / Solution
No atomization	No pressure is getting to the gun Check air system
	Gaskets part. [O4] worn out Replace gaskets part. [O4] worn out
	The head part. [1331-C5], the nozzle part. [1331-C4] and the needle part. [1331-C12] are worn out. Replace the head part. [1331-C5], the nozzle part. [1331-C4] and the needle part. [1331-C12]
	The product is exceeding the amount needed Reduce the product passage
	Lack of product (flow rate too low) Add product or reduce atomization air pressure
	Missing product in tank or clogged pipes Fill tank or clean up with solvent
Leakage from the nozzle	Mounted handwheel part. [1331-C9] worn out Replace mounted handwheel part. [1331-C9] worn out

Spare parts and components

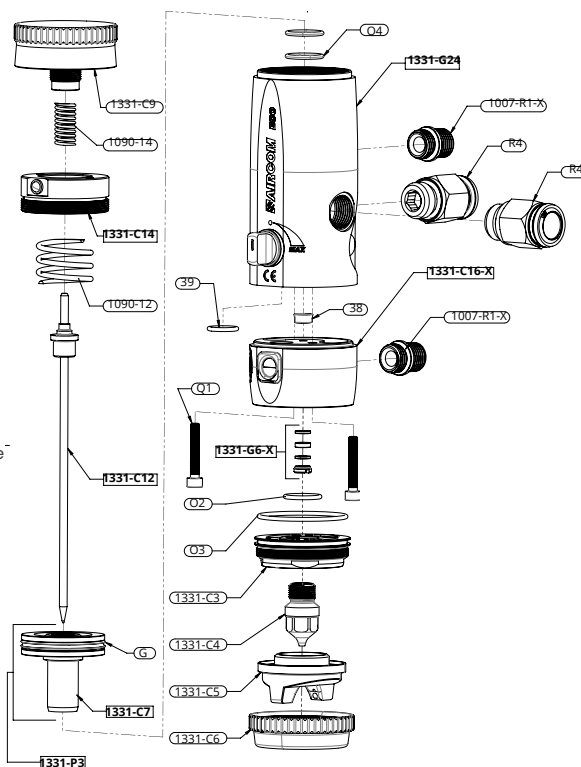


SPARE PARTS

DETAILS LIST

mod. ECO-X

- 38** [x1] Gasket
- 39** [x1] Gasket
- 1090-12** [x1] Spring
- 1090-14** [x1] Spring
- 1331-C3** [x1] Insert
- 1331-C4** [x1] Nozzle
- 1331-C5** [x1] Head
- 1331-C6** [x1] Ferrule
- 1331-C7** [x1] Plunger
- 1331-C9** [x1] Hand wheel
- 1331-C12** [x1] Complete needle
- 1331-C14** [x1] Cap with positioner
- 1331-C16-X** [x1] Mounted secondary body
in stainless steel
- 1331-G6-X** [x1] Stainless steel gasket kit
- 1331-G24** [x1] Body with regulating valve
- 1331-P3** [x1] Mounted plunger
- G** [x1] Gasket
- O2** [x1] Gasket
- O3** [x1] Gasket
- O4** [x2] Gasket
- Q1** [x2] Screw TCEI
- 1007-R1-X** [x2] Stainless steel junction
- R4** [x2] Junction



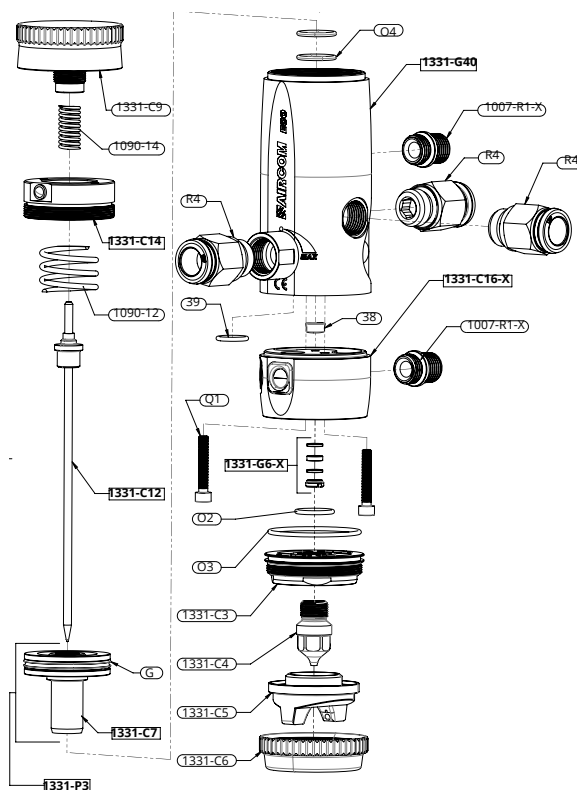
NOTES

The head protection cap is also available as a spare part.
 For the heads compatible with the model you can refer to the CNN table below.
 The connection part. [R4] provided by default in part. [1331-G24] can be replaced with the cap part. [C13].
 The cap inserted by default in part. [1331-C16-X] can be replaced with a fitting for the wash inlet circuit.

SPARE PARTS

DETAILS LIST

- | | |
|-------------------|-------------------------------------------------------|
| 38 | [x1] Gasket |
| 39 | [x1] Gasket |
| 1090-12 | [x1] Spring |
| 1090-14 | [x1] Spring |
| 1331-C3 | [x1] Insert |
| 1331-C4 | [x1] Nozzle |
| 1331-C5 | [x1] Head |
| 1331-C6 | [x1] Ferrule |
| 1331-C7 | [x1] Plunger |
| 1331-C9 | [x1] Hand wheel |
| 1331-C12 | [x1] Complete needle |
| 1331-C14 | [x1] Cap with positioner |
| 1331-C16-X | [x1] Mounted secondary body in stainless steel |
| 1331-G6 | [x1] Gasket kit |
| 1331-G40 | [x1] Primary body with valve for automatic regulation |
| 1331-P3 | [x1] Mounted plunger |
| G | [x1] Gasket |
| O2 | [x1] Gasket |
| O3 | [x1] Gasket |
| O4 | [x2] Gasket |
| Q1 | [x2] Screw TCEI |
| 1007-R1-X | [x2] Stainless steel junction |
| R4 | [x2] Junction |

mod. ECO-A-X

NOTES

The head protection cap is also available as a spare part.

For the heads compatible with the model you can refer to the CNN table below.

The connection part. [R4] provided by default in part. [1331-G24] can be replaced with the cap part. [C13].

The cap inserted by default in part. [1331-G40] can be replaced with a fitting for the air inlet circuit.

COMPATIBLE CNN

Cap-Nozzle-Needle

mod. ECO-X, ECO-A-X

1331-C5-LA

CAP

NOZZLE

NEEDLE



1331-C5-LA-0.8

1331-C4-0.8

1331-C12-0.8

1331-C5-LA-1.0

1331-C4-1.0

1331-C12-1.0

1331-C5-LA-1.2

1331-C4-1.2

1331-C12-1.2

1331-C5-LA-1.5

1331-C4-1.5

1331-C12-1.5



1331-C5-NA

CAP

NOZZLE

NEEDLE



1331-C5-NA-0.8

1331-C4-0.8

1331-C12-0.8

1331-C5-NA-1.0

1331-C4-1.0

1331-C12-1.0

1331-C5-NA-1.2

1331-C4-1.2

1331-C12-1.2

1331-C5-NA-1.5

1331-C4-1.5

1331-C12-1.5



CERTIFIED QUALITY

CERTIFICATIONS

All AIRCOM® products are certified according to norm EN 13 966 - 1 (VDMA-Einheitsblatt 24 366) and therefore also according to transfer efficiency parameters.



THREE-COLOR INSERT

Each gun is marked with a three-color three-dimensional seal. It represents an additional guarantee of authenticity and Italianity because it is present exclusively in original AIRCOM® guns.



SUPPORT

DO YOU NEED HELP?

We are at your disposal.



+39 0124 5154 44



aircom@aircom.it

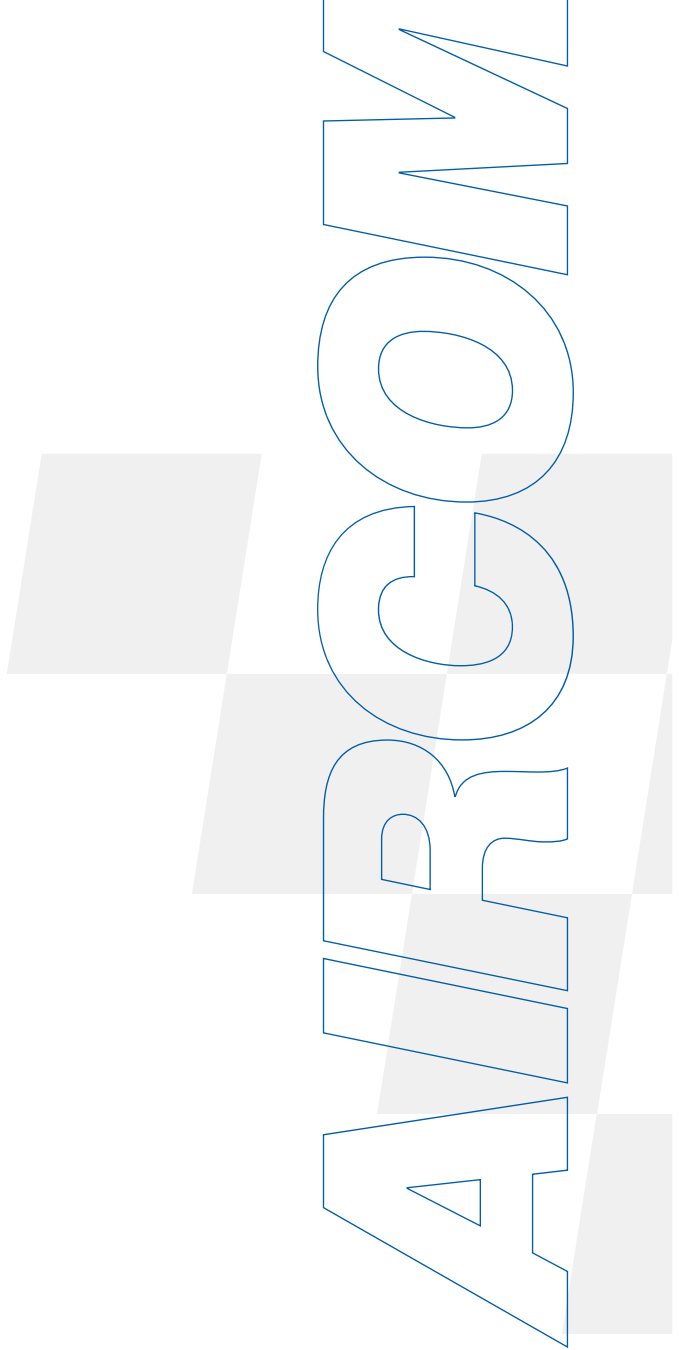


Online support

NOTES



A series of horizontal lines for taking notes, with three overlapping light gray squares positioned in the upper right area.





DISCOVER ALL PRODUCTS



Follow us



aircom.it