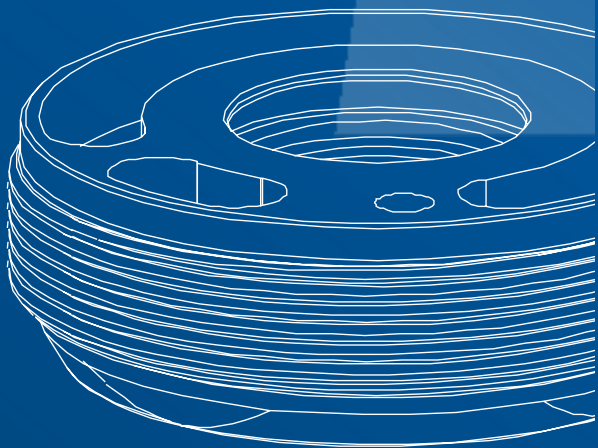
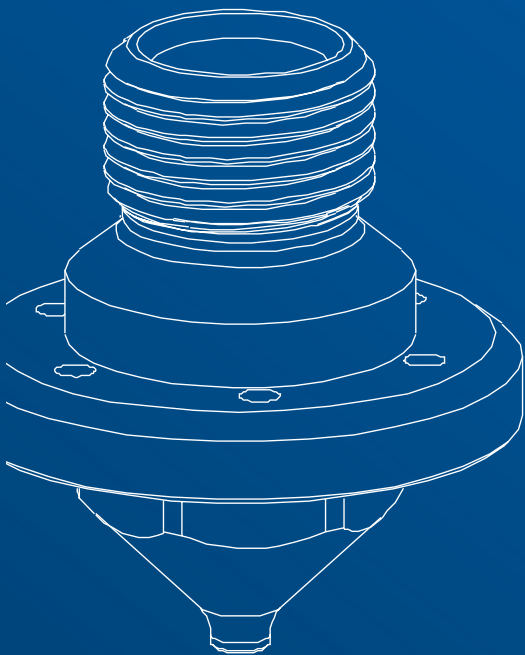


Spare parts and components

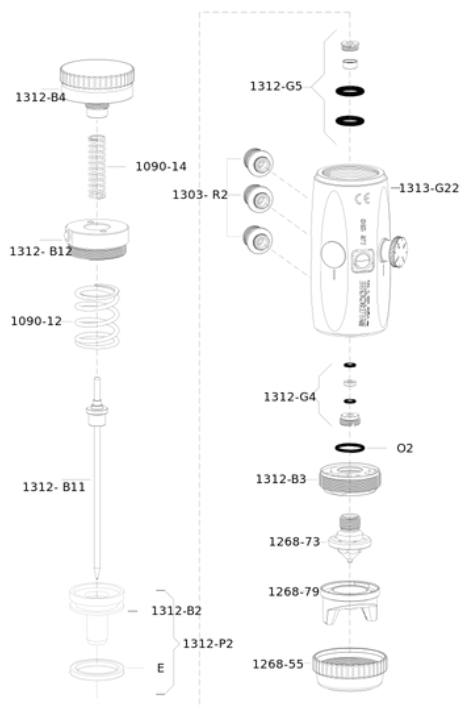


SPARE PARTS

DETAILS LIST

- 1090-12** [x1] Spring
- 1090-14** [x1] Spring
- 1268-55** [x2] Ferrule
- 1268-73** [x1] Nozzle
- 1268-79** [x1] Head
- 1312-B2** [x1] Plunger
- 1312-B3** [x1] Insert
- 1312-B4** [x1] Hand wheel
- 1312-B11** [x1] Complete needle
- 1312-B12** [x1] Cap with jack
- E** [x1] Gasket
- 1312-G4** [x1] Gasket kit
- 1312-G5** [x1] Supply valve kit
- 1313-G22** [x1] Body with internal bushing in brass, regulating valve and cap
- O2** [x1] Gasket
- 1312-P2** [x1] Mounted plunger
- 1303-R2** [x3] Junction

mod. LR110



NOTES

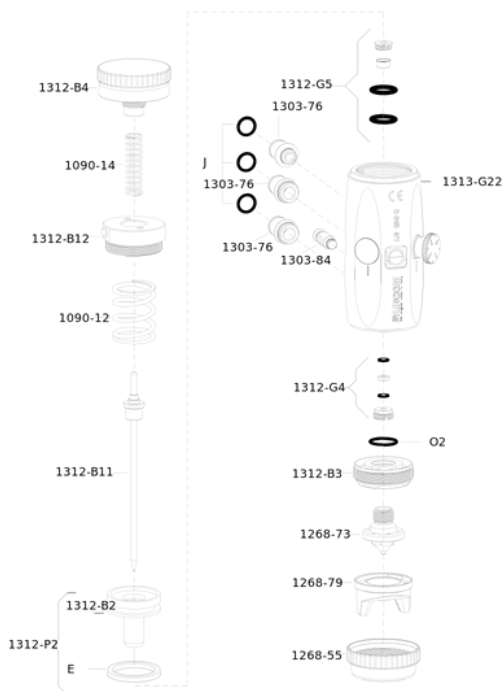
The head protection stopper is also available as a spare part.
You can refer to the CNN table below for compatible heads for your model.

SPARE PARTS

DETAILS LIST

- 1090-12** [x1] Spring
- 1090-14** [x1] Spring
- 1268-55** [x2] Ferrule
- 1268-73** [x1] Nozzle
- 1303-76** [x3] Junction
- 1268-79** [x1] Head
- 1303-84** [x1] Lockin pin
- 1312-B2** [x1] Plunger
- 1312-B3** [x1] Insert
- 1312-B4** [x1] Hand wheel
- 1312-B11** [x1] Complete needle
- 1312-B12** [x1] Cap with jack
- E** [x1] Gasket
- 1312-G4** [x1] Gasket kit
- 1312-G5** [x1] Supply valve kit
- 1313-G22** [x1] Body with internal
bushing in brass, regulating
valve and cap
- J** [x3] Gasket
- O22** [x1] Gasket
- 1312-P2** [x1] Mounted plunger

mod. LR110-Q



NOTES

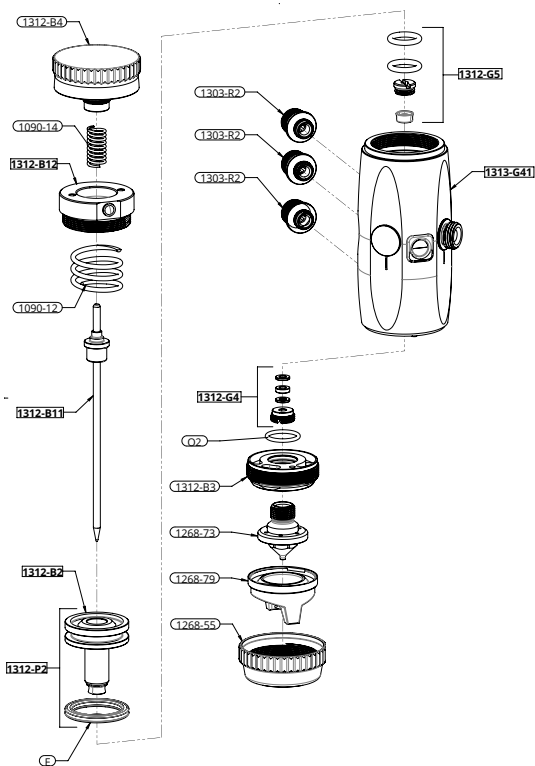
The head protection stopper is also available as a spare part.
You can refer to the CNN table below for compatible heads for your model.

SPARE PARTS

DETAILS LIST

- 1090-12** [x1] Spring
- 1090-14** [x1] Spring
- 1268-55** [x2] Ferrule
- 1268-73** [x1] Nozzle
- 1303-76** [x3] Junction
- 1268-79** [x1] Head
- 1303-84** [x1] Lockin pin
- 1312-B2** [x1] Plunger
- 1312-B3** [x1] Insert
- 1312-B4** [x1] Hand wheel
- 1312-B11** [x1] Complete needle
- 1312-B12** [x1] Cap with jack
- E** [x1] Gasket
- 1312-G4** [x1] Gasket kit
- 1312-G5** [x1] Supply valve kit
- 1313-G41** [x1] Body with bushing
internal brass, valve for
automatic regulation and
cap
- J** [x3] Gasket
- O22** [x1] Gasket
- 1312-P2** [x1] Mounted plunger

mod. LR110-A



NOTES

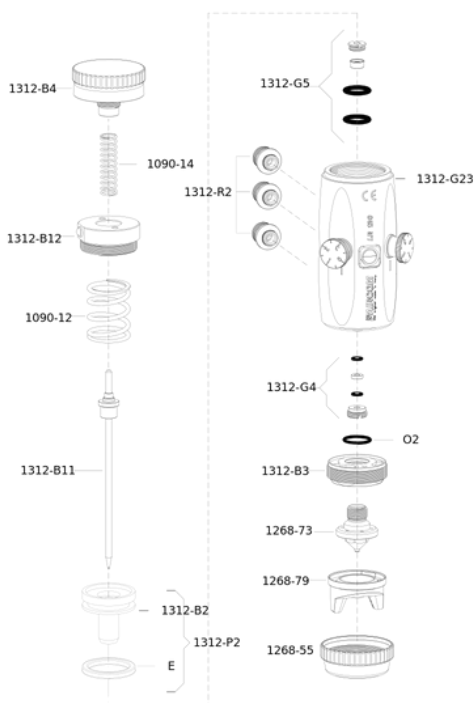
The head protection stopper is also available as a spare part.
You can refer to the CNN table below for compatible heads for your model.

SPARE PARTS

DETAILS LIST

- 1090-12** [x1] Spring
- 1090-14** [x1] Spring
- 1268-55** [x2] Ferrule
- 1268-73** [x1] Nozzle
- 1268-79** [x1] Head
- 1312-B2** [x1] Plunger
- 1312-B3** [x1] Insert
- 1312-B4** [x1] Hand wheel
- 1312-B11** [x1] Complete needle
- 1312-B12** [x1] Cap with jack
- E** [x1] Gasket
- 1312-G4** [x1] Gasket kit
- 1312-G5** [x1] Supply valve kit
- 1313-G23** [x1] Body with internal bushing in brass and regulating valves
- O22** [x1] Gasket
- 1312-P2** [x1] Mounted plunger
- 1303-R2** [x3] Junction

mod. LR120



NOTES

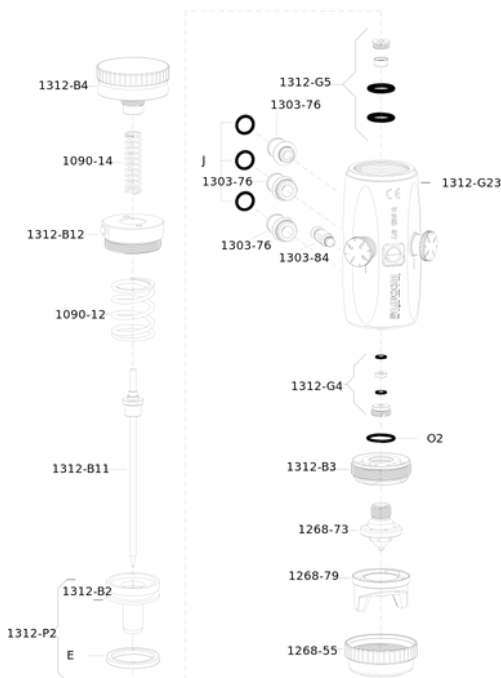
The head protection stopper is also available as a spare part.
You can refer to the CNN table below for compatible heads for your model.

SPARE PARTS

DETAILS LIST

- 1090-12** [x1] Spring
- 1090-14** [x1] Spring
- 1268-55** [x2] Ferrule
- 1268-73** [x1] Nozzle
- 1303-76** [x3] Junction
- 1268-79** [x1] Head
- 1303-84** [x1] Lockin pin
- 1312-B2** [x1] Plunger
- 1312-B3** [x1] Insert
- 1312-B4** [x1] Hand wheel
- 1312-B11** [x1] Complete needle
- 1312-B12** [x1] Cap with jack
- E** [x1] Gasket
- 1312-G4** [x1] Gasket kit
- 1312-G5** [x1] Supply valve kit
- 1313-G23** [x1] Body with internal bushing in brass and regulating valves
- J** [x3] Gasket
- O22** [x1] Gasket
- 1312-P2** [x1] Mounted plunger

mod. LR120-Q



NOTES

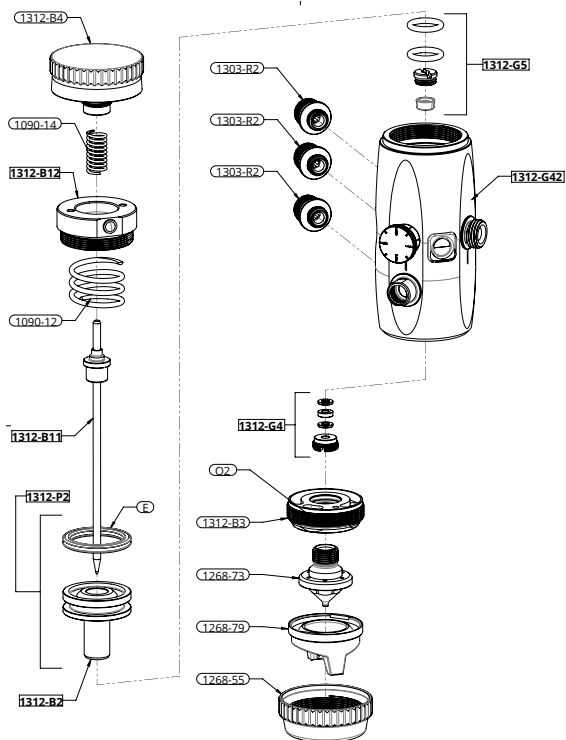
The head protection stopper is also available as a spare part.
You can refer to the CNN table below for compatible heads for your model.

SPARE PARTS

DETAILS LIST

- 1090-12** [x1] Spring
- 1090-14** [x1] Spring
- 1268-55** [x2] Ferrule
- 1268-73** [x1] Nozzle
- 1303-76** [x3] Junction
- 1268-79** [x1] Head
- 1303-84** [x1] Lockin pin
- 1312-B2** [x1] Plunger
- 1312-B3** [x1] Insert
- 1312-B4** [x1] Hand wheel
- 1312-B11** [x1] Complete needle
- 1312-B12** [x1] Cap with jack
- E** [x1] Gasket
- 1312-G4** [x1] Gasket kit
- 1312-G5** [x1] Supply valve kit
- 1313-G42** [x1] Body with bushing
internal brass, adjustment
screws and valve for
automatic adjustment
- J** [x3] Gasket
- O22** [x1] Gasket
- 1312-P2** [x1] Mounted plunger

mod. LR120-A





NOTES

The head protection stopper is also available as a spare part.
You can refer to the CNN table below for compatible heads for your model.

COMPATIBLE CNN

Cap-Nozzle-Needle

mod. LR110, LR110-Q, LR110-A, LR120, LR120-Q, LR120-A

1268-79	CAP	NOZZLE	NEEDLE
 	1268-79-BA-0.8	1268-73-0.8	1312-B11-0.8
	1268-79-BA-1.0	1268-73-1.0	1312-B11-1.0
	1268-79-BA-1.2	1268-73-1.2	1312-B11-1.2
	1268-79-BA-1.5	1268-73-1.5	1312-B11-1.5
	1268-79-BA-1.8	1268-73-1.8	1312-B11-1.8

CERTIFIED QUALITY

CERTIFICATIONS

All AIRCOM® products are certified according to norm EN 13 966 - 1 (VDMA-Einheitsblatt 24 366) and therefore also according to transfer efficiency parameters.



THREE-COLOR INSERT

Each gun is marked with a three-color three-dimensional seal. It represents an additional guarantee of authenticity and Italianity because it is present exclusively in original AIRCOM® guns.



SUPPORT

DO YOU NEED HELP?

We are at your disposal.



+39 0124 5154 44



aircom@aircom.it



Online support

AIRCOM



DISCOVER ALL PRODUCTS



Follow us



aircom.it