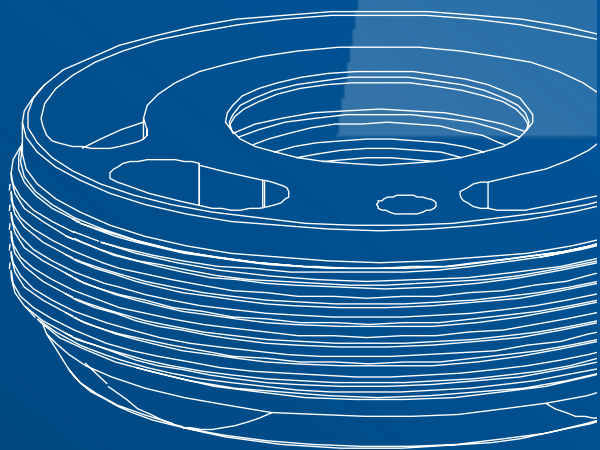
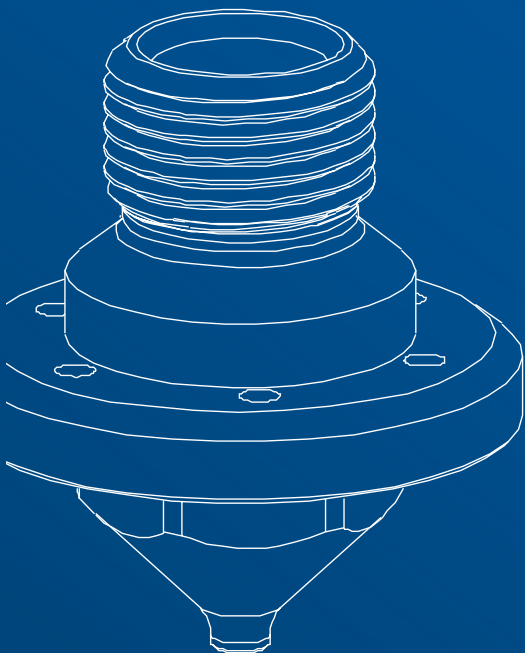


Spare parts and components

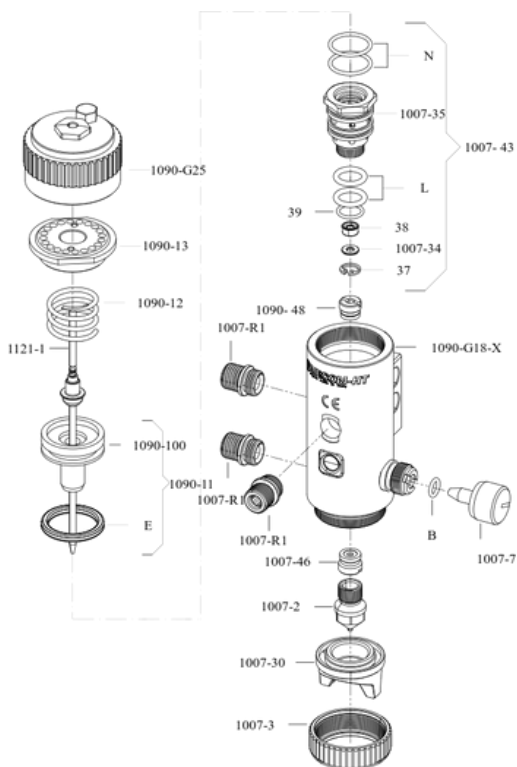


SPARE PARTS

DETAILS LIST

- 1007-2** [x1] Nozzle
- 1007-3** [x1] Ferrule
- 1007-7** [x2] Adjusting screw
- 1090-13** [x1] Cap
- 1007-30** [x1] Head
- 1121-1** [x1] Complete needle
- 1007-34** [x1] Gasket cover ring
- 1007-35** [x1] Valve
- 1090-11** [x1] Mounted plunger
- 37** [x1] Seeger
- 38** [x1] Gasket
- 39** [x1] Gasket
- 1090-12** [x1] Spring
- 1090-G25** [x1] Mounted hand wheel
- 1007-43** [x1] Mounted valve
- 1007-46** [x1] Gasket kit
- 1090-48** [x1] Gasket kit
- 1090-100** [x1] Plunger
- B** [x2] Gasket
- E** [x1] Gasket
- 1090-G18-X** [x1] Body with internal bushing in stainless steel, regulating valve, bracket block and cap
- L** [x2] Gasket
- N** [x2] Gasket
- 1007-R1** [x3] Junction

mod. HT



NOTE

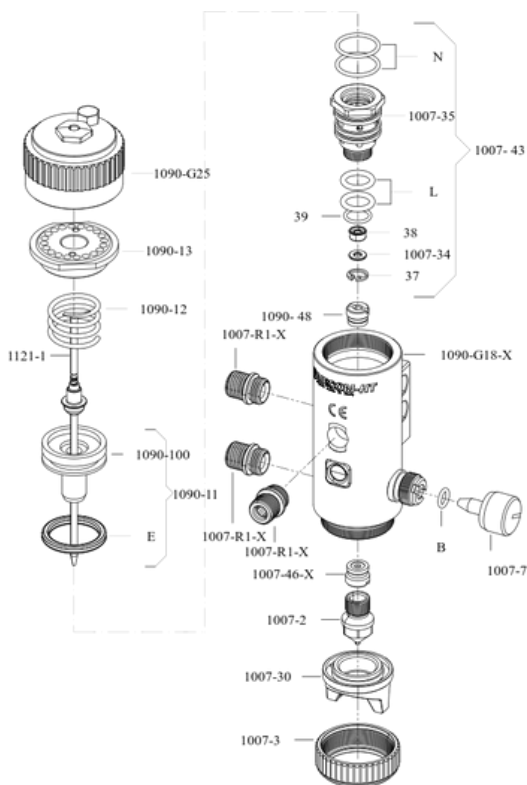
The head protection cap is also available as a spare part.
 For the heads compatible with the model you can refer to the CNN table below.
 The cap inserted by default in part. [1090-G18-X] can be replaced with a fitting for the washing circuit.

SPARE PARTS

DETAILS LIST

- 1007-2** [x1] Nozzle
- 1007-3** [x1] Ferrule
- 1007-7** [x2] Adjusting screw
- 1090-13** [x1] Cap
- 1007-30** [x1] Head
- 1121-1** [x1] Complete needle
- 1007-34** [x1] Gasket cover ring
- 1007-35** [x1] Valve
- 1090-11** [x1] Mounted plunger
- 37** [x1] Seeger
- 38** [x1] Gasket
- 39** [x1] Gasket
- 1090-12** [x1] Spring
- 1090-G25** [x1] Mounted hand wheel
- 1007-43** [x1] Mounted valve
- 1007-46-X** [x1] Stainless steel gasket kit
- 1090-48** [x1] Gasket kit
- 1090-100** [x1] Plunger
- B** [x2] Gasket
- E** [x1] Gasket
- 1090-G18-X** [x1] Body with internal bushing in stainless steel, regulating valve, bracket block and cap
- L** [x2] Gasket
- N** [x2] Gasket
- 1007-R1-X** [x3] Stainless steel junction

mod. HT-X



NOTE

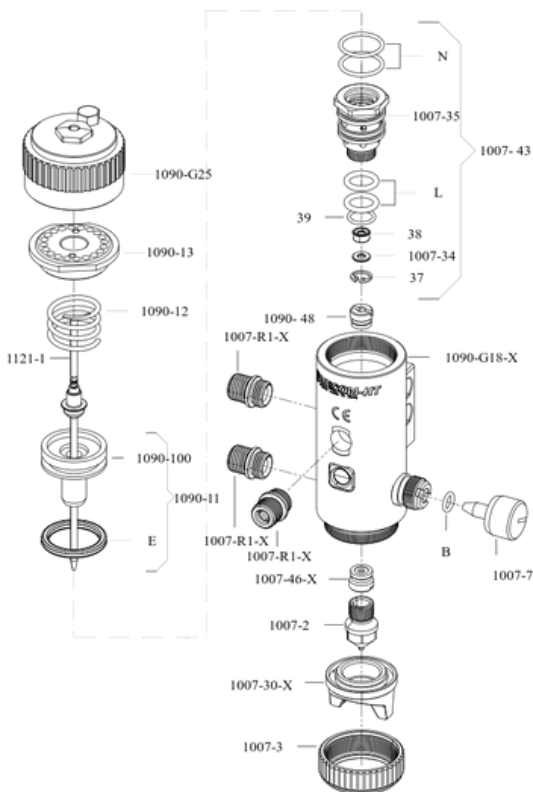
The head protection cap is also available as a spare part.
 For the heads compatible with the model you can refer to the CNN table below.
 The cap inserted by default in part. [1090-G18-X] can be replaced with a fitting for the washing circuit.

SPARE PARTS

DETAILS LIST

- 1007-2** [x1] Nozzle
- 1007-3** [x1] Ferrule
- 1007-7** [x2] Adjusting screw
- 1090-13** [x1] Cap
- 1007-30-X** [x1] Stainless steel head
- 1121-1** [x1] Complete needle
- 1007-34** [x1] Gasket cover ring
- 1007-35** [x1] Valve
- 1090-11** [x1] Mounted plunger
- 37** [x1] Seeger
- 38** [x1] Gasket
- 39** [x1] Gasket
- 1090-12** [x1] Spring
- 1090-G25** [x1] Mounted hand wheel
- 1007-43** [x1] Mounted valve
- 1007-46-X** [x1] Stainless steel gasket kit
- 1090-48** [x1] Gasket kit
- 1090-100** [x1] Plunger
- B** [x2] Gasket
- E** [x1] Gasket
- 1090-G18-X** [x1] Body with internal bushing in stainless steel, regulating valve, bracket block and cap
- L** [x2] Gasket
- N** [x2] Gasket
- 1007-R1-X** [x3] Stainless steel junction

mod. HT-XC





NOTE



The head protection cap is also available as a spare part. For the heads compatible with the model you can refer to the CNN table below. The cap inserted by default in part. [1090-G18-X] can be replaced with a fitting for the washing circuit.

COMPATIBLE CNN

Cap-Nozzle-Needle

mod. HT, HT-X


1007-30-KI	CAP	NOZZLE	NEEDLE
 	1007-30-KI-0.8	1007-2-0.8	1121-1-0.8
	1007-30-KI-1.0	1007-2-1.0	1121-1-1.0
	1007-30-KI-1.2	1007-2-1.2	1121-1-1.2
	1007-30-KI-1.5	1007-2-1.5	1121-1-1.5
	1007-30-KI-1.8	1007-2-1.8	1121-1-1.8
	1007-30-KI-2.0	1007-2-2.0	1121-1-2.0
	1007-30-KI-2.2	1007-2-2.2	1121-1-2.2
	1007-30-KI-2.5	1007-2-2.5	1121-1-2.5
1007-30-KI-3.0	1007-2-3.0	1121-1-3.0	


1007-30-ZI	CAP	NOZZLE	NEEDLE
 	1007-30-ZI-0.8	1007-2-0.8	1121-1-0.8
	1007-30-ZI-1.0	1007-2-1.0	1121-1-1.0
	1007-30-ZI-1.2	1007-2-1.2	1121-1-1.2
	1007-30-ZI-1.5	1007-2-1.5	1121-1-1.5
	1007-30-ZI-1.8	1007-2-1.8	1121-1-1.8
	1007-30-ZI-2.0	1007-2-2.0	1121-1-2.0
	1007-30-ZI-2.2	1007-2-2.2	1121-1-2.2
	1007-30-ZI-2.5	1007-2-2.5	1121-1-2.5
1007-30-ZI-3.0	1007-2-3.0	1121-1-3.0	

COMPATIBLE CNN

Cap-Nozzle-Needle

mod. HT, HT-X


1007-30-NI	CAP	NOZZLE	NEEDLE
	1007-30-NI-0.8	1007-2-0.8	1121-1-0.8
	1007-30-NI-1.0	1007-2-1.0	1121-1-1.0
	1007-30-NI-1.2	1007-2-1.2	1121-1-1.2
	1007-30-NI-1.5	1007-2-1.5	1121-1-1.5
	1007-30-NI-1.8	1007-2-1.8	1121-1-1.8
	1007-30-NI-2.0	1007-2-2.0	1121-1-2.0
	1007-30-NI-2.2	1007-2-2.2	1121-1-2.2
	1007-30-NI-2.5	1007-2-2.5	1121-1-2.5
	1007-30-NI-3.0	1007-2-3.0	1121-1-3.0


1007-30-TI	CAP	NOZZLE	NEEDLE
	1007-30-TI-0.8	1007-2-0.8	1121-1-0.8
	1007-30-TI-1.0	1007-2-1.0	1121-1-1.0
	1007-30-TI-1.2	1007-2-1.2	1121-1-1.2
	1007-30-TI-1.5	1007-2-1.5	1121-1-1.5
	1007-30-TI-1.8	1007-2-1.8	1121-1-1.8
	1007-30-TI-2.0	1007-2-2.0	1121-1-2.0
	1007-30-TI-2.2	1007-2-2.2	1121-1-2.2
	1007-30-TI-2.5	1007-2-2.5	1121-1-2.5
	1007-30-TI-3.0	1007-2-3.0	1121-1-3.0

COMPATIBLE CNN

Cap-Nozzle-Needle

mod. HT, HT-X


1007-30-WI	CAP	NOZZLE	NEEDLE
	1007-30-WI-0.8	1007-2-0.8	1121-1-0.8
	1007-30-WI-1.0	1007-2-1.0	1121-1-1.0
	1007-30-WI-1.2	1007-2-1.2	1121-1-1.2
	1007-30-WI-1.5	1007-2-1.5	1121-1-1.5
	1007-30-WI-1.8	1007-2-1.8	1121-1-1.8
	1007-30-WI-2.0	1007-2-2.0	1121-1-2.0
	1007-30-WI-2.2	1007-2-2.2	1121-1-2.2
	1007-30-WI-2.5	1007-2-2.5	1121-1-2.5
	1007-30-WI-3.0	1007-2-3.0	1121-1-3.0

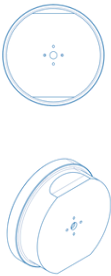
1007-30-LE	CAP	NOZZLE	NEEDLE
	1007-30-LE-0.8	1007-2-0.8	1121-1-0.8
	1007-30-LE-1.0	1007-2-1.0	1121-1-1.0
	1007-30-LE-1.2	1007-2-1.2	1121-1-1.2
	1007-30-LE-1.5	1007-2-1.5	1121-1-1.5
	1007-30-LE-1.8	1007-2-1.8	1121-1-1.8
	1007-30-LE-2.0	1007-2-2.0	1121-1-2.0
	1007-30-LE-2.2	1007-2-2.2	1121-1-2.2
	1007-30-LE-2.5	1007-2-2.5	1121-1-2.5
	1007-30-LE-3.0	1007-2-3.0	1121-1-3.0

COMPATIBLE CNN

Cap-Nozzle-Needle

mod. HT, HT-X



1007-30-SI	CAP	NOZZLE	NEEDLE
	1007-30-SI-0.8	1007-2-0.8	1121-1-0.8
	1007-30-SI-1.0	1007-2-1.0	1121-1-1.0
	1007-30-SI-1.2	1007-2-1.2	1121-1-1.2
	1007-30-SI-1.5	1007-2-1.5	1121-1-1.5



1007-30-SF	CAP	NOZZLE	NEEDLE
	1007-30-SF-0.8	1007-2-0.8	1121-1-0.8
	1007-30-SF-1.0	1007-2-1.0	1121-1-1.0
	1007-30-SF-1.2	1007-2-1.2	1121-1-1.2
	1007-30-SF-1.5	1007-2-1.5	1121-1-1.5
	1007-30-SF-1.8	1007-2-1.8	1121-1-1.8
	1007-30-SF-2.0	1007-2-2.0	1121-1-2.0
	1007-30-SF-2.2	1007-2-2.2	1121-1-2.2
	1007-30-SF-2.5	1007-2-2.5	1121-1-2.5
	1007-30-SF-3.0	1007-2-3.0	1121-1-3.0

COMPATIBLE CNN

Cap-Nozzle-Needle

mod. HT-XC


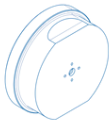
1007-30-KX	CAP	NOZZLE	NEEDLE
 	1007-30-KX-0.8	1007-2-0.8	1121-1-0.8
	1007-30-KX-1.0	1007-2-1.0	1121-1-1.0
	1007-30-KX-1.2	1007-2-1.2	1121-1-1.2
	1007-30-KX-1.5	1007-2-1.5	1121-1-1.5
	1007-30-KX-1.8	1007-2-1.8	1121-1-1.8
	1007-30-KX-2.0	1007-2-2.0	1121-1-2.0
	1007-30-KX-2.2	1007-2-2.2	1121-1-2.2
	1007-30-KX-2.5	1007-2-2.5	1121-1-2.5
	1007-30-KX-3.0	1007-2-3.0	1121-1-3.0

1007-30-ZX	CAP	NOZZLE	NEEDLE
 	1007-30-ZX-0.8	1007-2-0.8	1121-1-0.8
	1007-30-ZX-1.0	1007-2-1.0	1121-1-1.0
	1007-30-ZX-1.2	1007-2-1.2	1121-1-1.2
	1007-30-ZX-1.5	1007-2-1.5	1121-1-1.5
	1007-30-ZX-1.8	1007-2-1.8	1121-1-1.8
	1007-30-ZX-2.0	1007-2-2.0	1121-1-2.0
	1007-30-ZX-2.2	1007-2-2.2	1121-1-2.2
	1007-30-ZX-2.5	1007-2-2.5	1121-1-2.5
	1007-30-ZX-3.0	1007-2-3.0	1121-1-3.0

COMPATIBLE CNN

Cap-Nozzle-Needle

mod. HT-XC

1007-30-SFX	CAP	NOZZLE	NEEDLE
	1007-30-SFX-0.8	1007-2-0.8	1121-1-0.8
	1007-30-SFX-1.0	1007-2-1.0	1121-1-1.0
	1007-30-SFX-1.2	1007-2-1.2	1121-1-1.2
	1007-30-SFX-1.5	1007-2-1.5	1121-1-1.5
	1007-30-SFX-1.8	1007-2-1.8	1121-1-1.8
	1007-30-SFX-2.0	1007-2-2.0	1121-1-2.0
	1007-30-SFX-2.2	1007-2-2.2	1121-1-2.2
	1007-30-SFX-2.5	1007-2-2.5	1121-1-2.5
	1007-30-SFX-3.0	1007-2-3.0	1121-1-3.0

CERTIFIED QUALITY

CERTIFICATIONS

All AIRCOM® products are certified according to norm EN 13 966 - 1 (VDMA-Einheitsblatt 24 366) and therefore also according to transfer efficiency parameters.



THREE-COLOR INSERT

Each gun is marked with a three-color three-dimensional seal. It represents an additional guarantee of authenticity and Italianity because it is present exclusively in original AIRCOM® guns.



SUPPORT

DO YOU NEED HELP?

We are at your disposal.



+39 0124 5154 44



aircom@aircom.it



Online support



DISCOVER ALL PRODUCTS



Follow us



aircom.it