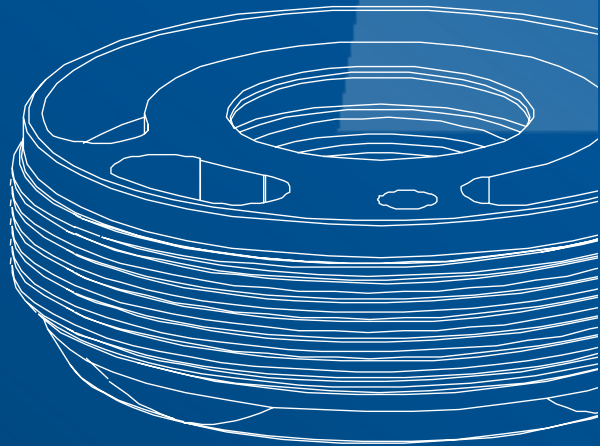
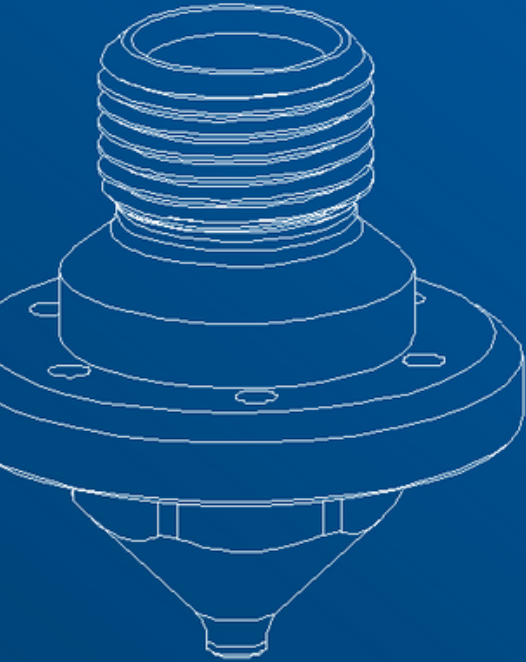


BP系列
模组。BP、BP-X、BP-XC

备件和组件

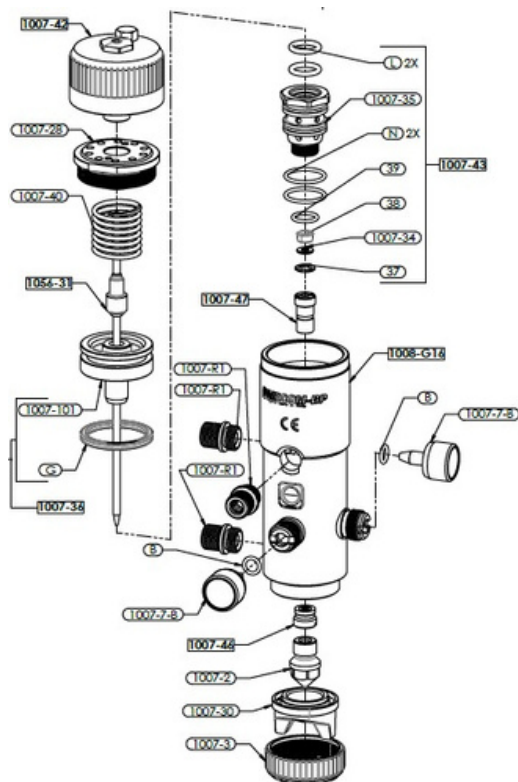


备件

详情清单

- 1007-2 [x1]喷嘴
- 1007-3 [x1]环形螺母
- 1007-7-B [x2]调节螺丝
- 1007-28 [x1]盖子
- 1007-30 [x1]头部
- 1056-31 [x1]杆
- 1007-34 [x1]密封盖环
- 1007-35 [x1]阀门
- 1007-36 [x1]活塞安装
- 37 [x1]Seeger
- 38 [x1]垫圈
- 39 [x1]密封
- 1007-40 [x1]弹簧
- 1007-42 [x1]手轮组装
- 1007-43 [x1]阀门组装
- 1007-46 [x1]密封套件
- 1007-47 [x1]密封套件
- 1007-101 [x1]柱塞
- B [x2]密封
- G [x1]密封
- 1008-G16 [x1]带内部黄铜衬套的阀体，
控制阀调节和夹紧块
- L [x2]垫圈
- N [x2]垫圈
- 1007-R1 [x3]接头

模组。BP



笔记

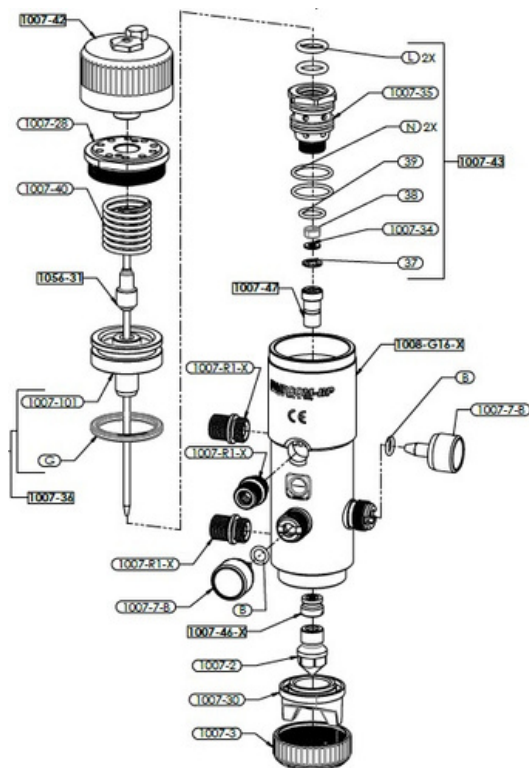
头部保护帽也可作为备件提供。对于与该型号兼容的头，您可以参考下面的 CNN 表。

备件

详情清单

1007-2	[x1]喷嘴
1007-3	[x1]环形螺母
1007-7-B	[x2]调节螺丝
1007-28	[x1]盖子
1007-30	[x1]头部
1056-31	[x1]杆
1007-34	[x1]密封盖环
1007-35	[x1]阀门
1007-36	[x1]活塞安装
37	[x1]Seeger
38	[x1]垫圈
39	[x1]垫圈
1007-40	[x1]弹簧
1007-42	[x1]手轮组装
1007-43	[x1]阀门组装
1007-46-X	[x1]不锈钢垫圈套件
1007-47	[x1]垫圈套件
1007-101	[x1]柱塞
B	[x2]垫圈
G	[x1]垫圈
1008-G16-X	[x1]带内部不锈钢衬套的阀体，调节阀和夹紧块
L	[x2]垫圈
N	[x2]垫圈
1007-R1-X	[x3]不锈钢接头

模组。BP-X



笔记

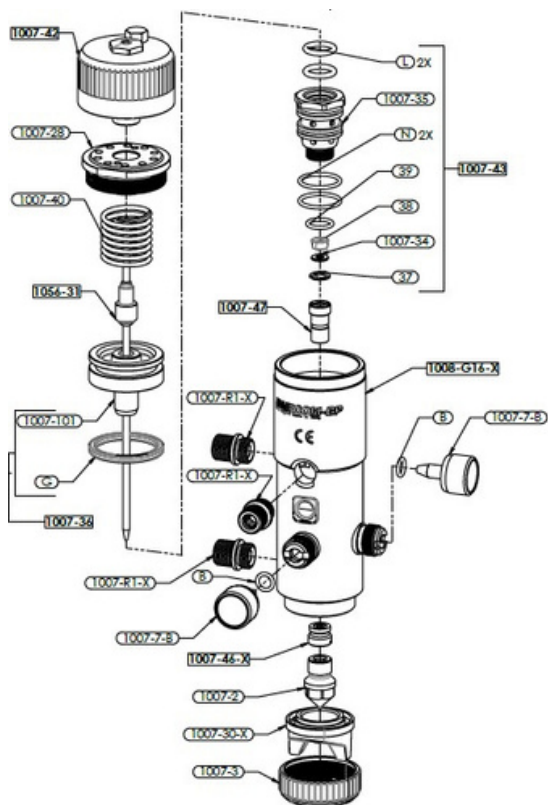
头部保护帽也可作为备件提供。对于与该型号兼容的头，您可以参考下面的 CNN 表。

备件

详情清单

1007-2	[x1]喷嘴
1007-3	[x1]环形螺母
1007-7-B	[x2]调节螺丝
1007-28	[x1]盖子
1007-30-X	[x1]不锈钢头
1056-31	[x1]连杆
1007-34	[x1]密封盖环
1007-35	[x1]阀门
1007-36	[x1]活塞安装
37	[x1]Seeger
38	[x1]密封件
39	[x1]垫圈
1007-40	[x1]弹簧
1007-42	[x1]手轮组装
1007-43	[x1]阀门组装
1007-46-X	[x1]不锈钢垫圈套件
1007-47	[x1]垫圈套件
1007-101	[x1]柱塞
B	[x2]垫圈
G	[x1]垫圈
1008-G16-X	[x1]带内部衬套的阀体不锈 钢, 调节阀和夹紧块
L	[x2]垫圈
N	[x2]垫圈
1007-R1-X	[x3] 不锈钢接头

模组。BP-XC




笔记


头部保护帽也可作为备件提供。对于与该型号兼容的头，您可以参考下面的 CNN 表。

兼容的 CNN

帽-喷嘴-针

模组。BP、BP-X

1007-30-KI	帽	喷嘴	针
 	1007-30-KI-0.8	1007-2-0.8	1056-31-0.8
	1007-30-KI-1.0	1007-2-1.0	1056-31-1.0
	1007-30-KI-1.2	1007-2-1.2	1056-31-1.2
	1007-30-KI-1.5	1007-2-1.5	1056-31-1.5
	1007-30-KI-1.8	1007-2-1.8	1056-31-1.8
	1007-30-KI-2.0	1007-2-2.0	1056-31-2.0
	1007-30-KI-2.2	1007-2-2.2	1056-31-2.2
	1007-30-KI-2.5	1007-2-2.5	1056-31-2.5
	1007-30-KI-3.0	1007-2-3.0	1056-31-3.0



1007-30-ZI	头	喷嘴	针
 	1007-30-ZI-0.8	1007-2-0.8	1056-31-0.8
	1007-30-ZI-1.0	1007-2-1.0	1056-31-1.0
	1007-30-ZI-1.2	1007-2-1.2	1056-31-1.2
	1007-30-ZI-1.5	1007-2-1.5	1056-31-1.5
	1007-30-ZI-1.8	1007-2-1.8	1056-31-1.8
	1007-30-ZI-2.0	1007-2-2.0	1056-31-2.0
	1007-30-ZI-2.2	1007-2-2.2	1056-31-2.2
	1007-30-ZI-2.5	1007-2-2.5	1056-31-2.5
	1007-30-ZI-3.0	1007-2-3.0	1056-31-3.0

兼容的 CNN

帽-喷嘴-针

模组。BP、BP-X

1007-30-WI	帽	喷嘴	针
 	1007-30-WI-0.8	1007-2-0.8	1056-31-0.8
	1007-30-WI-1.0	1007-2-1.0	1056-31-1.0
	1007-30-WI-1.2	1007-2-1.2	1056-31-1.2
	1007-30-WI-1.5	1007-2-1.5	1056-31-1.5
	1007-30-WI-1.8	1007-2-1.8	1056-31-1.8
	1007-30-WI-2.0	1007-2-2.0	1056-31-2.0
	1007-30-WI-2.2	1007-2-2.2	1056-31-2.2
	1007-30-WI-2.5	1007-2-2.5	1056-31-2.5
	1007-30-WI-3.0	1007-2-3.0	1056-31-3.0



1007-30-NI	帽	喷嘴	针
 	1007-30-NI-0.8	1007-2-0.8	1056-31-0.8
	1007-30-NI-1.0	1007-2-1.0	1056-31-1.0
	1007-30-NI-1.2	1007-2-1.2	1056-31-1.2
	1007-30-NI-1.5	1007-2-1.5	1056-31-1.5
	1007-30-NI-1.8	1007-2-1.8	1056-31-1.8
	1007-30-NI-2.0	1007-2-2.0	1056-31-2.0
	1007-30-NI-2.2	1007-2-2.2	1056-31-2.2
	1007-30-NI-2.5	1007-2-2.5	1056-31-2.5
	1007-30-NI-3.0	1007-2-3.0	1056-31-3.0

兼容的 CNN

帽-喷嘴-针

模组。BP、BP-X

1007-30-TI	帽	喷嘴	针
 	1007-30-TI-0.8	1007-2-0.8	1056-31-0.8
	1007-30-TI-1.0	1007-2-1.0	1056-31-1.0
	1007-30-TI-1.2	1007-2-1.2	1056-31-1.2
	1007-30-TI-1.5	1007-2-1.5	1056-31-1.5
	1007-30-TI-1.8	1007-2-1.8	1056-31-1.8
	1007-30-TI-2.0	1007-2-2.0	1056-31-2.0
	1007-30-TI-2.2	1007-2-2.2	1056-31-2.2
	1007-30-TI-2.5	1007-2-2.5	1056-31-2.5
	1007-30-TI-3.0	1007-2-3.0	1056-31-3.0

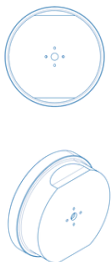
1007-30-UI *	帽	喷嘴	针
 	1007-30-UI-0.8	1007-2-U-0.8	1056-31-U-0.8
	1007-30-UI-1.0	1007-2-U-1.0	1056-31-U-1.0
	1007-30-UI-1.2	1007-2-U-1.2	1056-31-U-1.2
	1007-30-UI-1.5	1007-2-U-1.5	1056-31-U-1.5
	1007-30-UI-1.8	1007-2-U-1.8	1056-31-U-1.8
	1007-30-UI-2.0	1007-2-U-2.0	1056-31-U-2.0
	1007-30-UI-2.2	1007-2-U-2.2	1056-31-U-2.2
	1007-30-UI-2.5	1007-2-U-2.5	1056-31-U-2.5
	1007-30-UI-3.0	1007-2-U-3.0	1056-31-U-3.0

* 自清洁

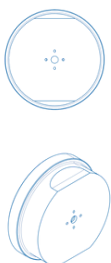
兼容的 CNN

帽-喷嘴-针

模组。BP、BP-X

1007-30-SF	帽	喷嘴	针
	1007-30-SF-0.8	1007-2-0.8	1056-31-0.8
	1007-30-SF-1.0	1007-2-1.0	1056-31-1.0
	1007-30-SF-1.2	1007-2-1.2	1056-31-1.2
	1007-30-SF-1.5	1007-2-1.5	1056-31-1.5
	1007-30-SF-1.8	1007-2-1.8	1056-31-1.8
	1007-30-SF-2.0	1007-2-2.0	1056-31-2.0
	1007-30-SF-2.2	1007-2-2.2	1056-31-2.2
	1007-30-SF-2.5	1007-2-2.5	1056-31-2.5
	1007-30-SF-3.0	1007-2-3.0	1056-31-3.0

mod. BP-XC



1007-30-SFX	帽	喷嘴	针
	1007-30-SFX-0.8	1007-2-0.8	1056-31-0.8
	1007-30-SFX-1.0	1007-2-1.0	1056-31-1.0
	1007-30-SFX-1.2	1007-2-1.2	1056-31-1.2
	1007-30-SFX-1.5	1007-2-1.5	1056-31-1.5
	1007-30-SFX-1.8	1007-2-1.8	1056-31-1.8
	1007-30-SFX-2.0	1007-2-2.0	1056-31-2.0
	1007-30-SFX-2.2	1007-2-2.2	1056-31-2.2
	1007-30-SFX-2.5	1007-2-2.5	1056-31-2.5
	1007-30-SFX-3.0	1007-2-3.0	1056-31-3.0

兼容的 CNN

帽-喷嘴-针

模组。BP-XC

1007-30-KX	帽	喷嘴	针
 	1007-30-KX-0.8	1007-2-0.8	1056-31-0.8
	1007-30-KX-1.0	1007-2-1.0	1056-31-1.0
	1007-30-KX-1.2	1007-2-1.2	1056-31-1.2
	1007-30-KX-1.5	1007-2-1.5	1056-31-1.5
	1007-30-KX-1.8	1007-2-1.8	1056-31-1.8
	1007-30-KX-2.0	1007-2-2.0	1056-31-2.0
	1007-30-KX-2.2	1007-2-2.2	1056-31-2.2
	1007-30-KX-2.5	1007-2-2.5	1056-31-2.5
	1007-30-KX-3.0	1007-2-3.0	1056-31-3.0

1007-30-ZX	帽	喷嘴	针
 	1007-30-ZX-0.8	1007-2-0.8	1056-31-0.8
	1007-30-ZX-1.0	1007-2-1.0	1056-31-1.0
	1007-30-ZX-1.2	1007-2-1.2	1056-31-1.2
	1007-30-ZX-1.5	1007-2-1.5	1056-31-1.5
	1007-30-ZX-1.8	1007-2-1.8	1056-31-1.8
	1007-30-ZX-2.0	1007-2-2.0	1056-31-2.0
	1007-30-ZX-2.2	1007-2-2.2	1056-31-2.2
	1007-30-ZX-2.5	1007-2-2.5	1056-31-2.5
	1007-30-ZX-3.0	1007-2-3.0	1056-31-3.0



探索所有产品



跟着我们



航空网