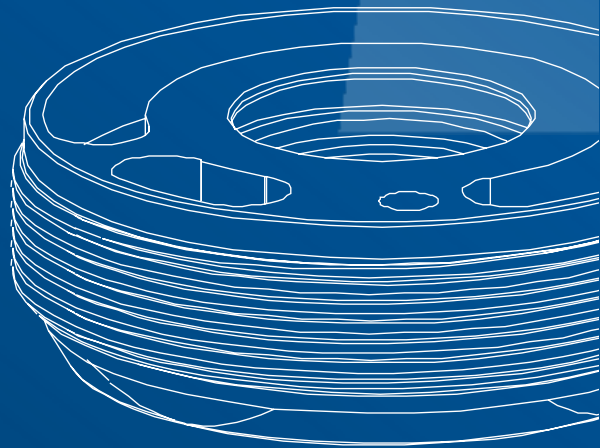
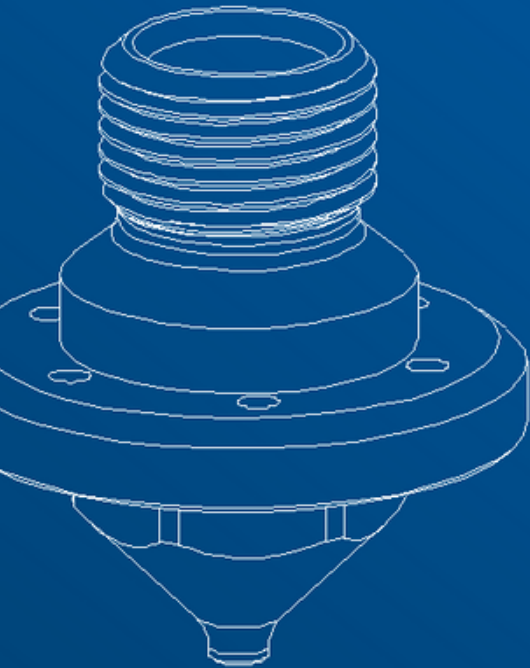


50TH.2 series

mod. 50TH.2, 50TH.2-Q-X, 50TH.2-QS-X

Spare parts and components

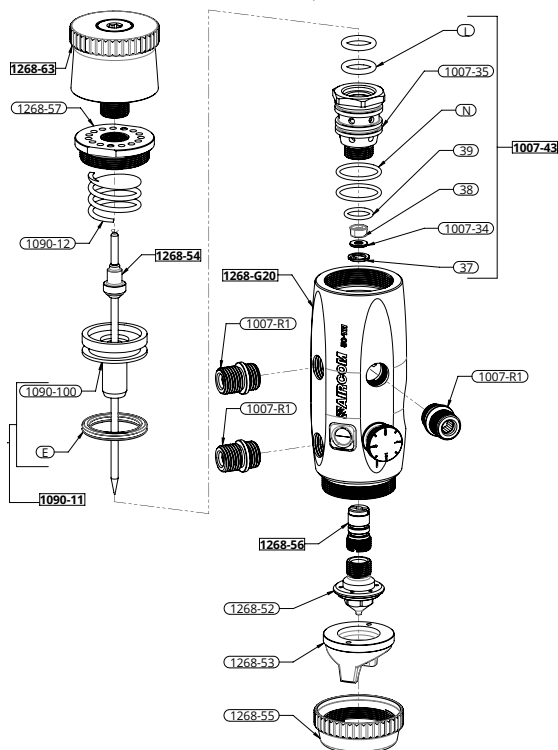


SPARE PARTS

DETAILS LIST

- 37 [x1]Seeger
- 38 [x1]Gasket
- 39 [x1]Gasket
- 1007-34 [x1]Gasket cover ring
- 1007-35 [x1]Valve
- 1007-43 [x1]Mounted valve
- 1090-11 [x1]Mounted plunger
- 1090-12 [x1]Spring
- 1090-100 [x1]Plunger
- 1268-52 [x1]Nozzle
- 1268-53 [x1]Head
- 1268-55 [x1]Complete needle
- 1268-56 [x1]Ferrule
- 1268-57 [x1]Gasket kit
- 1268-63 [x1]Cap
- 1268-67 [x1]Mounted hand wheel
- 1268-G20 [x1]Body with brass inner
bushing, adjusting screw
and cap
- E [x1]Gasket
- L [x2]Gasket
- N [x2]Gasket
- 1007-R1 [x3]Junction

mod. 50TH.2



NOTES

The head protection stopper is also available as a spare part.

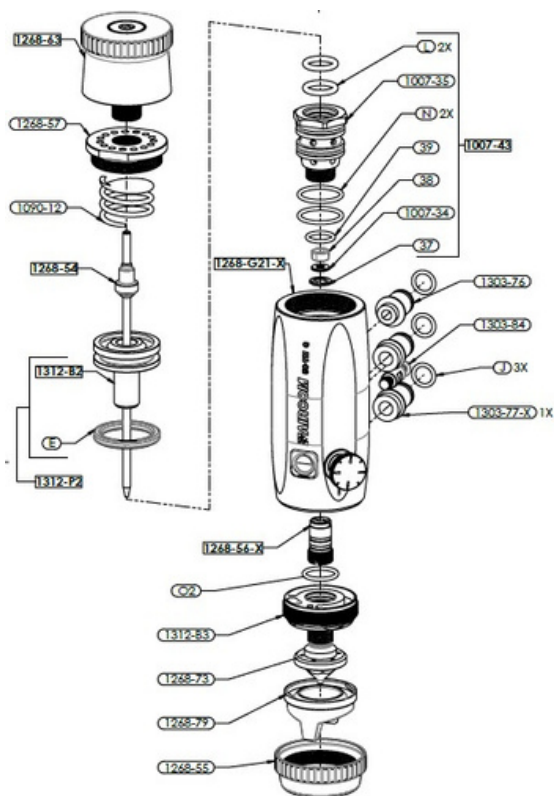
You can refer to the CNN table below for compatible heads for your model.

SPARE PARTS

DETAILS LIST

- 37 [x1]Seeger
- 38 [x1]Gasket
- 39 [x1]Gasket
- 1007-34 [x1]Gasket cover ring
- 1007-35 [x1]Valve
- 1007-43 [x1]Mounted valve
- 1090-12 [x1]Spring
- 1268-54 [x1]Complete needle
- 1268-55 [x1]Ferrule
- 1268-56-X [x1]Stainless steel gasket kit
- 1268-57 [x1]Cap
- 1268-63 [x1]Mounted hand wheel
- 1268-73 [x1]Nozzle
- 1268-79 [x1]Head
- 1268-G21-X [x1]Body with stainless steel inner bushing, adjusting screw and cap
- 1303-76 [x1]Junction
- 1303-77 [x1]Junction
- 1303-77-X [x1]Junction in stainless steel
- 1303-84 [x1]Locking pin
- 1312-B2 [x1]Plunger
- 1312-B3 [x1]Insert
- 1312-P2 [x1]Mounted plunger
- E [x1]Gasket
- J [x3]Gasket
- L [x2]Gasket
- N [x2]Gasket
- O2 [x1]Gasket

mod. 50TH.2-Q-X



NOTES

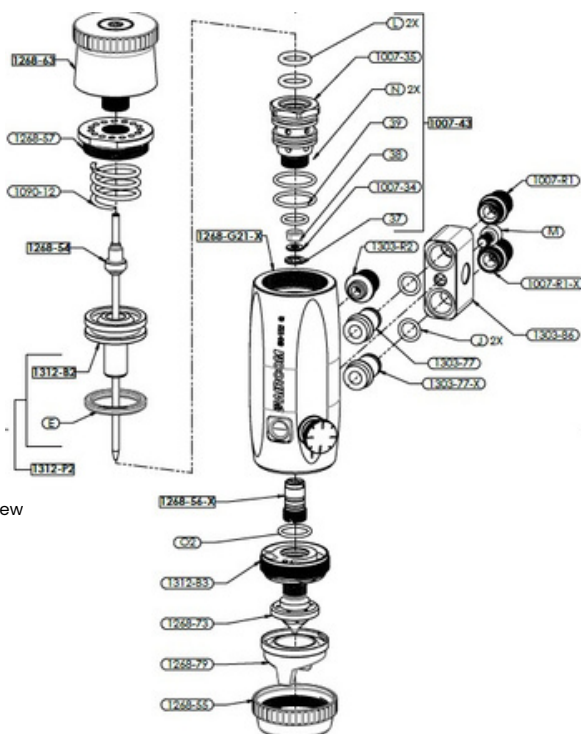
The head protection cap is also available as a spare part.
 For the heads compatible with the model you can refer to the CNN table below.
 The cap foreseen by default in part. [1268-G21-X] can be replaced with a fitting for the washing circuit.

SPARE PARTS

DETAILS LIST

- 37 [x1]Seeger
- 38 [x1]Gasket
- 39 [x1]Gasket
- 1007-34 [x1]Gasket cover ring
- 1007-35 [x1]Valve
- 1007-43 [x1]Mounted valve
- 1007-R1 [x1]Junction
- 1007-R1-X [x1]Stainless Steel Junction
- 1090-12 [x1]Spring
- 1268-54 [x1]Complete needle
- 1268-55 [x1]Ferrule
- 1268-56-X [x1]Stainless steel gasket kit
- 1268-57 [x1]Cap
- 1268-63 [x1]Mounted hand wheel
- 1268-73 [x1]Nozzle
- 1268-79 [x1]Head
- 1268-G21-X [x1]Body with stainless steel inner bushing, adjusting screw and cap
- 1303-77 [x1]Junction
- 1303-77-X [x1]Junction
- 1303-86 [x1]Block
- 1303-R2 [x1]Junction
- 1312-B2 [x1]Plunger
- 1312-B3 [x1]Insert
- 1312-P2 [x1]Mounted plunger
- E [x1]Gasket
- J [x3]Gasket
- L [x2]Gasket
- M [x1]TCEI Screw
- N [x2]Gasket
- O2 [x1]Gasket

mod. 50TH.2-QS-X



NOTE

The head protection cap is also available as a spare part.



For the heads compatible with the model you can refer to the CNN table below.

The cap foreseen by default in part. [1268-G21-X] can be replaced with a fitting for the washing circuit.



COMPATIBLE CNN

Cap-Nozzle-Needle

mod. 50TH.2

1268-53-BI	CAP	NOZZLE	NEEDLE
 	1268-53-BI-0.8	1268-52-0.8	1268-54-0.8
	1268-53-BI-1.0	1268-52-1.0	1268-54-1.0
	1268-53-BI-1.2	1268-52-1.2	1268-54-1.2
	1268-53-BI-1.5	1268-52-1.5	1268-54-1.5
	1268-53-BI-1.8	1268-52-1.8	1268-54-1.8

mod. 50TH.2-Q-X, 50TH.2-QS-X

1268-79-BA	CAP	NOZZLE	NEEDLE
 	1268-79-BA-0.8	1268-73-0.8	1268-54-0.8
	1268-79-BA-1.0	1268-73-1.0	1268-54-1.0
	1268-79-BA-1.2	1268-73-1.2	1268-54-1.2
	1268-79-BA-1.5	1268-73-1.5	1268-54-1.5
	1268-79-BA-1.8	1268-73-1.8	1268-54-1.8

CERTIFIED QUALITY

CERTIFICATIONS

All AIRCOM® products are certified according to norm EN 13 966 - 1 (VDMA-Einheitsblatt 24 366) and therefore also according to transfer efficiency parameters.



THREE-COLOR INSERT

Each gun is marked with a three-color three-dimensional seal. It represents an additional guarantee of authenticity and Italianity because it is present exclusively in original AIRCOM® guns.



SUPPORT

DO YOU NEED HELP?

We are at your disposal.



+39 0124 5154 44



aircom@aircom.it



Online support

AIRCOM



DISCOVER ALL PRODUCTS



Follow us



aircom.it