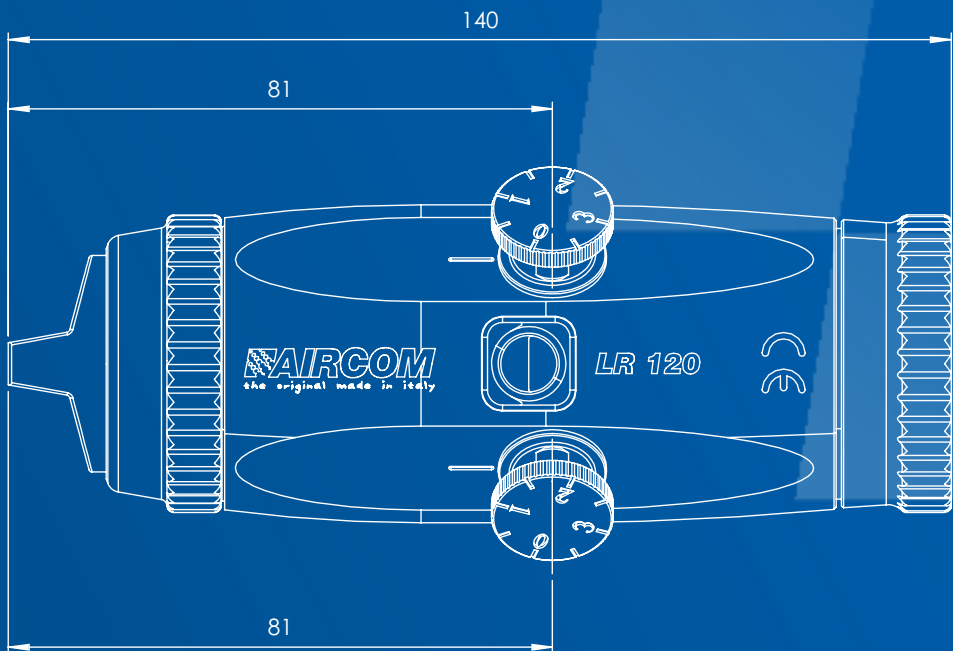


Instruction manual



mod. LR110, LR110-Q, LR110-A, LR120, LR120-Q, LR120-A

AVAILABLE MODELS

mod. LR110

Fan adjustment

mod. LR110-Q

Possibility of using the quick release block, the AIRCOM® QRB

mod. LR110-A

Possibility of remote fan adjustment

mod. LR120

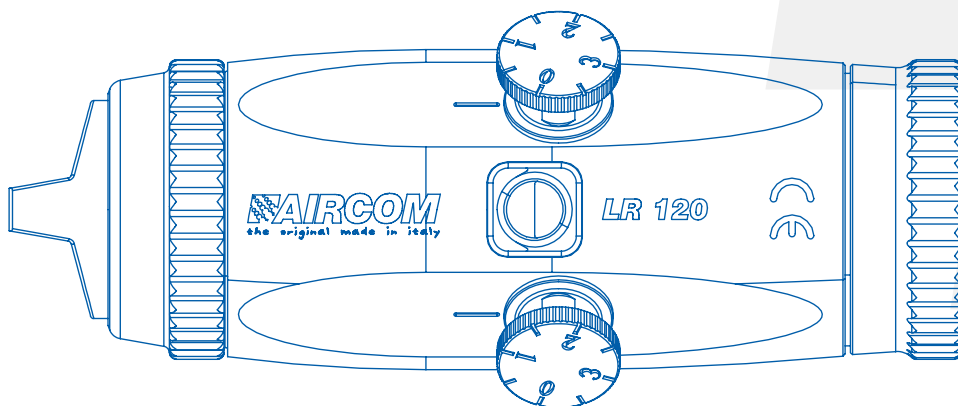
Fan and atomization air adjustment

mod. LR120-Q

Fan and atomization air adjustment and possibility of using the quick release block, the AIRCOM® QRB

mod. LR120-A

Possibility of remote fan adjustment



Index

Instruction Manual

Warnings	.04
Maintenance and cleaning	.04
Installation and start-up	.05
Technical data	.08
Troubleshooting	.09
Spare parts and components	.10
Certified quality	.16
Support	.16
Notes	.17



WARNINGS!

Carefully read and follow all instructions and safety precautions before using the product.



MANUALS

Our manuals are available at aircom.it/en/support/manuals/ Or, by scanning the QR Code on this page.

WARNINGS

CORROSIVE PRODUCT WARNINGS

Our guns can be used with the majority of water, or solvent-based pigments for coating and finishing all types of surfaces. However, they are not designed to spray abrasive and/or corrosive products. If abrasive and/or corrosive products are used, guns with components made of the appropriate material can be ordered.

HEALTH HAZARD

Some chemicals, once sprayed, may be harmful and cause irritation or health disorders. Careful reading of all labels and instructions on how to use the product are necessary. Use of the product is restricted to trained technical personnel, with the use of special safety glasses when adjusting the gun and, while the system is operating.

MAINTENANCE AND CLEANING

MAINTENANCE

Before any maintenance work, empty the gun and disconnect it from both, the compressed air supply, and the liquid supply. Use only original AIRCOM® accessories, spare parts, and related components: any other product not supplied by AIRCOM® is not approved or authorized. AIRCOM® is not liable for any damage caused by using non-original spare parts and accessories.

CLEANING

Use exclusively appropriate liquid cleaners with neutral pH 6-8. Do not use acids, alkaline solutions or other cleaning agents containing sodium hydroxide, which are aggressive for cleaning the exterior of the gun. Do not immerse the gun in liquid cleaners that may cause corrosion of the product. Clean all material passages by propagating water within the paint circuit: inadequate cleaning can cause damages to the fan shape. While cleaning, avoid scratching the surfaces of the air nozzle holes and the dipstick.

INSTALLATION

TECHNICAL SPECIFICATIONS

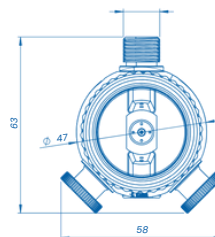
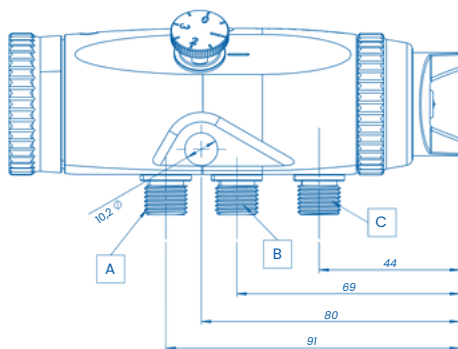
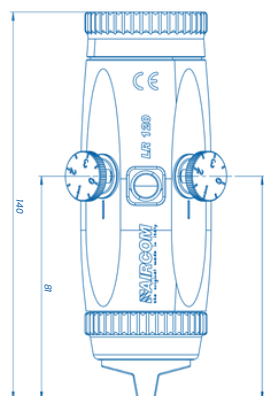
Connection hole diameter: 10,2 mm.

Size of pipe junctions:

- Control air inlet: **A** = $\frac{1}{4}$ gas
- Atomizing air inlet: **B** = $\frac{1}{4}$ gas
- Product inlet: **C** = $\frac{1}{4}$ gas

Gun weight: 0,65 kg

Gun size: see dimensioned views



VIDEO TUTORIALS ►

Our video tutorials are available at aircom.it/en/support/tutorials/
Or, by scanning the QR Code on this page.



INSTALLATION AND STARTUP

Before using a new gun or a new product, clean the gun thoroughly with an appropriate solvent. Powering should be done with dry, filtered air and regulated to constant pressure.

DIRECTIONS FOR GUN OPERATION

A

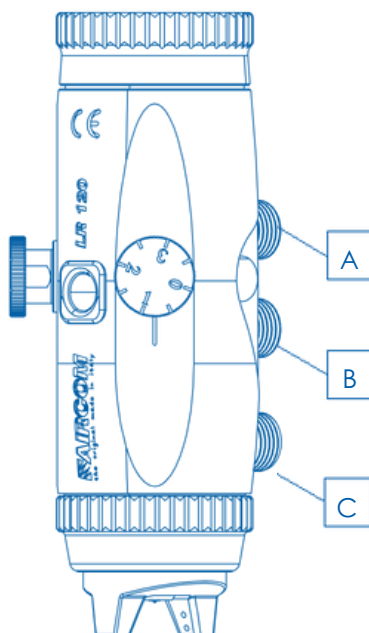
Pipe \varnothing ext. X \varnothing int. = 8 X 6
Plunger opening \geq 4,0 bar

B

Pipe \varnothing ext. X \varnothing int. = 8 X 6
Atomization: from 1,0 to 3,5 bar

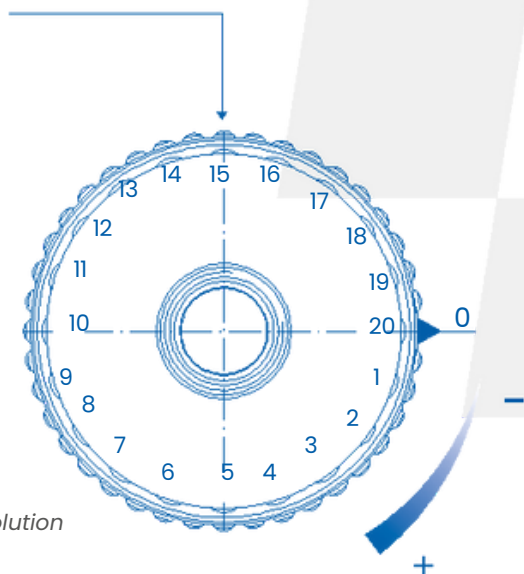
C

Pipe \varnothing ext. X \varnothing int. = 8 X 6
Product inlet



SEQUENZA REGOLAZIONI

1. Lock the gun to the system using the fastening bracket and orient the head towards the appropriate coverage direction. When using the -Q version, lock the system block first, and then hook the gun.
2. Connect the atomization air, control air and product piping to the junctions shown on the previous page.
3. Screw the handwheel part. [1312-B4] as far as it will go (do not force when reaching the stop). Act on the control air. If no drop of pigment comes out, remove the control air, and open the handwheel part. [1312-B4] with one click. Repeat the process until the first drop appears.
4. Open the handwheel part. [1312-B4] with the necessary clicks to determine the desired amount of pigment.
5. With the LR110 and LR110-Q models, act on the adjustment screw to obtain the desired atomization range.
With the LR120 and LR120-Q models, act on the adjustment screws to obtain the desired atomization range.
With the LR110-A and LR120-A act remotely to adjust the fan.



20 shots per revolution

TECHNICAL DATA





HEAD 1268-79-BA

HEAD Ø NOZZLE	SHOTS	FLOW RATE OF THE FLUID (g/min)	ATOMIZATION PRESSURE (kg/cm ²)	AIR CONSUMPTION (l/min)
1268-79-BA Ø 0,8	8	116	1,0	127
	10	140	1,2	142
1268-79-BA Ø 1,0	9	176	1,5	170
	11	221	1,7	187
1268-79-BA Ø 1,2	10	241	2,0	207
	13	312	2,3	225
1268-79-BA Ø 1,5	12	331	2,4	248
	15	434	2,6	260

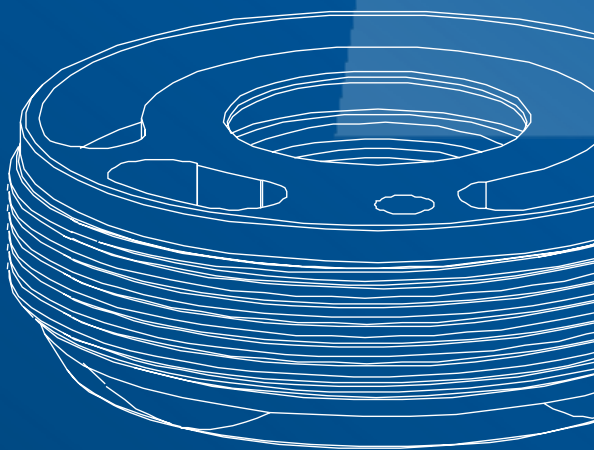
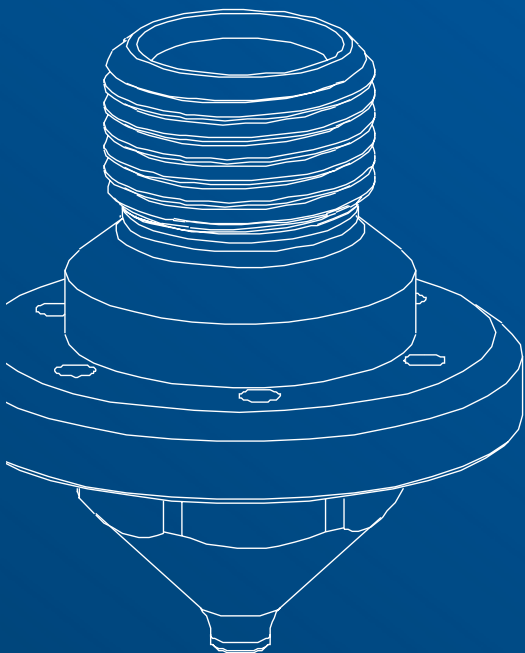
NOTES

Pump pressure 0.8 to 1.0 Kg/cm².
Liquid used for testing: water. Ford cup viscosity 4 = 11 sec.

TROUBLESHOOTING

Anomaly	Problem / Solution
<p>No atomization</p>	<p>No pressure is getting to the gun <i>Check air system</i></p> <p>Supply valve kit part. [1312-G5] worn out <i>Replace supply valve kit part. [1312-G5] worn out</i></p>
	<p>The head part. [1268-79], nozzle part. [1268-73] and needle part. [1312-B11] are worn out. <i>Replace the head part. [1268-79], the nozzle part. [1268-73] and the needle part. [1312-B11]</i></p>
	<p>The product is exceeding the amount needed <i>Reduce the product passage</i></p>
	<p>Lack of product (flow rate too low) <i>Add product or reduce atomization air pressure</i></p>
	<p>Missing product in tank or clogged pipes <i>Fill tank or clean up with solvent</i></p>
<p>Leakage from the nozzle</p>	<p>Mounted handwheel part. [1312-B4] worn out <i>Replace mounted handwheel part. [1312-B4] worn out</i></p>

Spare parts and components

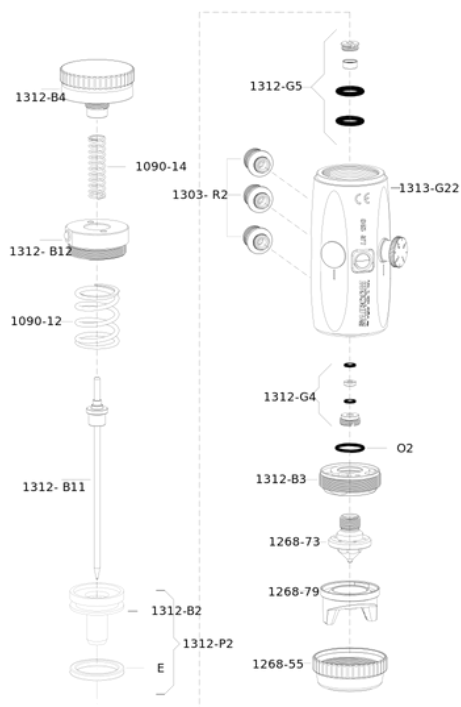


SPARE PARTS

DETAILS LIST

- 1090-12** [x1] Spring
- 1090-14** [x1] Spring
- 1268-55** [x2] Ferrule
- 1268-73** [x1] Nozzle
- 1268-79** [x1] Head
- 1312-B2** [x1] Plunger
- 1312-B3** [x1] Insert
- 1312-B4** [x1] Hand wheel
- 1312-B11** [x1] Complete needle
- 1312-B12** [x1] Cap with jack
- E** [x1] Gasket
- 1312-G4** [x1] Gasket kit
- 1312-G5** [x1] Supply valve kit
- 1313-G22** [x1] Body with internal bushing in brass, regulating valve and cap
- O2** [x1] Gasket
- 1312-P2** [x1] Mounted plunger
- 1303-R2** [x3] Junction

mod. LR110



NOTES

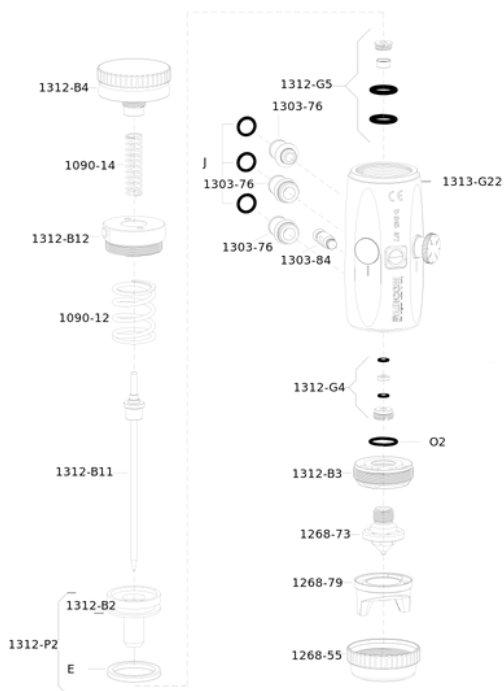
The head protection stopper is also available as a spare part.
You can refer to the CNN table below for compatible heads for your model.

SPARE PARTS

DETAILS LIST

- 1090-12** [x1] Spring
- 1090-14** [x1] Spring
- 1268-55** [x2] Ferrule
- 1268-73** [x1] Nozzle
- 1303-76** [x3] Junction
- 1268-79** [x1] Head
- 1303-84** [x1] Lockin pin
- 1312-B2** [x1] Plunger
- 1312-B3** [x1] Insert
- 1312-B4** [x1] Hand wheel
- 1312-B11** [x1] Complete needle
- 1312-B12** [x1] Cap with jack
- E** [x1] Gasket
- 1312-G4** [x1] Gasket kit
- 1312-G5** [x1] Supply valve kit
- 1313-G22** [x1] Body with internal
bushing in brass, regulating
valve and cap
- J** [x3] Gasket
- O22** [x1] Gasket
- 1312-P2** [x1] Mounted plunger

mod. LR110-Q



NOTES

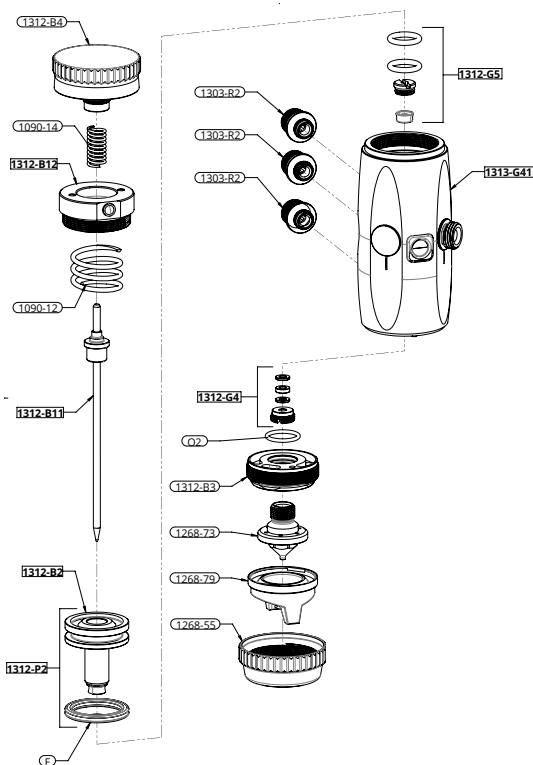
The head protection stopper is also available as a spare part.
You can refer to the CNN table below for compatible heads for your model.

SPARE PARTS

DETAILS LIST

- 1090-12** [x1] Spring
- 1090-14** [x1] Spring
- 1268-55** [x2] Ferrule
- 1268-73** [x1] Nozzle
- 1303-76** [x3] Junction
- 1268-79** [x1] Head
- 1303-84** [x1] Lockin pin
- 1312-B2** [x1] Plunger
- 1312-B3** [x1] Insert
- 1312-B4** [x1] Hand wheel
- 1312-B11** [x1] Complete needle
- 1312-B12** [x1] Cap with jack
- E** [x1] Gasket
- 1312-G4** [x1] Gasket kit
- 1312-G5** [x1] Supply valve kit
- 1313-G41** [x1] Body with bushing
internal brass, valve for
automatic regulation and
cap
- J** [x3] Gasket
- O22** [x1] Gasket
- 1312-P2** [x1] Mounted plunger

mod. LR110-A



NOTES

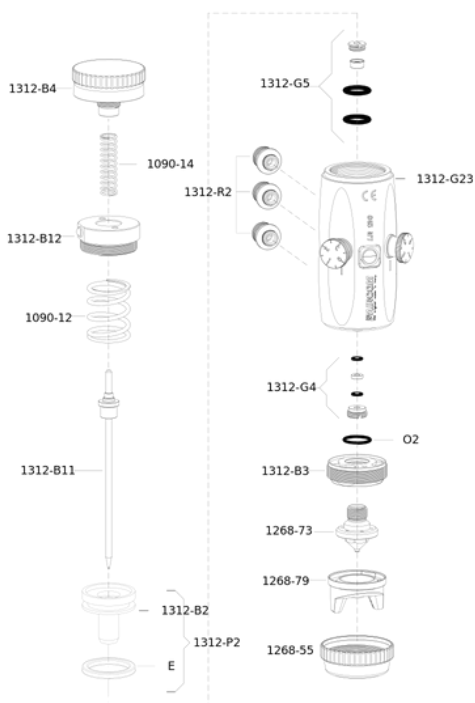
The head protection stopper is also available as a spare part.
You can refer to the CNN table below for compatible heads for your model.

SPARE PARTS

DETAILS LIST

- 1090-12** [x1] Spring
- 1090-14** [x1] Spring
- 1268-55** [x2] Ferrule
- 1268-73** [x1] Nozzle
- 1268-79** [x1] Head
- 1312-B2** [x1] Plunger
- 1312-B3** [x1] Insert
- 1312-B4** [x1] Hand wheel
- 1312-B11** [x1] Complete needle
- 1312-B12** [x1] Cap with jack
- E** [x1] Gasket
- 1312-G4** [x1] Gasket kit
- 1312-G5** [x1] Supply valve kit
- 1313-G23** [x1] Body with internal bushing in brass and regulating valves
- O22** [x1] Gasket
- 1312-P2** [x1] Mounted plunger
- 1303-R2** [x3] Junction

mod. LR120



NOTES

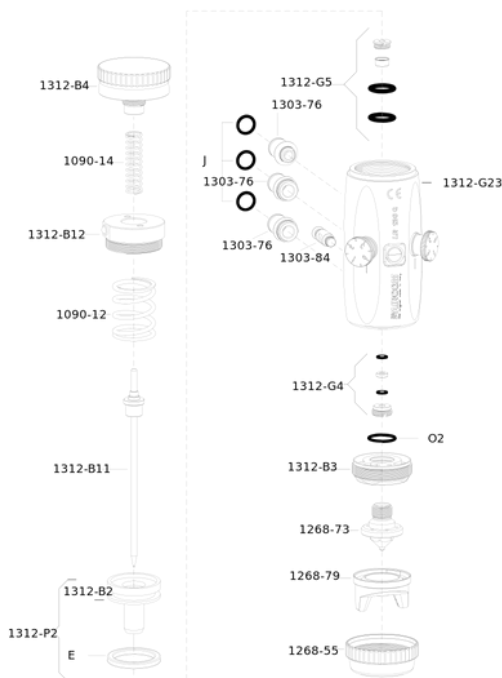
The head protection stopper is also available as a spare part.
You can refer to the CNN table below for compatible heads for your model.

SPARE PARTS

DETAILS LIST

- 1090-12** [x1] Spring
- 1090-14** [x1] Spring
- 1268-55** [x2] Ferrule
- 1268-73** [x1] Nozzle
- 1303-76** [x3] Junction
- 1268-79** [x1] Head
- 1303-84** [x1] Lockin pin
- 1312-B2** [x1] Plunger
- 1312-B3** [x1] Insert
- 1312-B4** [x1] Hand wheel
- 1312-B11** [x1] Complete needle
- 1312-B12** [x1] Cap with jack
- E** [x1] Gasket
- 1312-G4** [x1] Gasket kit
- 1312-G5** [x1] Supply valve kit
- 1313-G23** [x1] Body with internal bushing in brass and regulating valves
- J** [x3] Gasket
- O22** [x1] Gasket
- 1312-P2** [x1] Mounted plunger

mod. LR120-Q



NOTES

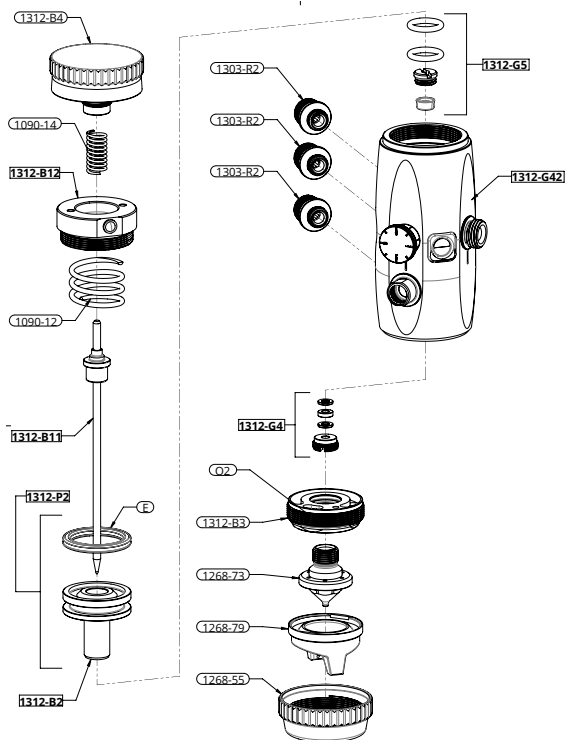
The head protection stopper is also available as a spare part.
You can refer to the CNN table below for compatible heads for your model.

SPARE PARTS

DETAILS LIST

- 1090-12** [x1] Spring
- 1090-14** [x1] Spring
- 1268-55** [x2] Ferrule
- 1268-73** [x1] Nozzle
- 1303-76** [x3] Junction
- 1268-79** [x1] Head
- 1303-84** [x1] Lockin pin
- 1312-B2** [x1] Plunger
- 1312-B3** [x1] Insert
- 1312-B4** [x1] Hand wheel
- 1312-B11** [x1] Complete needle
- 1312-B12** [x1] Cap with jack
- E** [x1] Gasket
- 1312-G4** [x1] Gasket kit
- 1312-G5** [x1] Supply valve kit
- 1313-G42** [x1] Body with bushing
internal brass, adjustment
screws and valve for
automatic adjustment
- J** [x3] Gasket
- O22** [x1] Gasket
- 1312-P2** [x1] Mounted plunger

mod. LR120-A





NOTES

The head protection stopper is also available as a spare part.
You can refer to the CNN table below for compatible heads for your model.

COMPATIBLE CNN

Cap-Nozzle-Needle

mod. LR110, LR110-Q, LR110-A, LR120, LR120-Q, LR120-A

1268-79	CAP	NOZZLE	NEEDLE
 	1268-79-BA-0.8	1268-73-0.8	1312-B11-0.8
	1268-79-BA-1.0	1268-73-1.0	1312-B11-1.0
	1268-79-BA-1.2	1268-73-1.2	1312-B11-1.2
	1268-79-BA-1.5	1268-73-1.5	1312-B11-1.5
	1268-79-BA-1.8	1268-73-1.8	1312-B11-1.8

CERTIFIED QUALITY

CERTIFICATIONS

All AIRCOM® products are certified according to norm EN 13 966 - 1 (VDMA-Einheitsblatt 24 366) and therefore also according to transfer efficiency parameters.



THREE-COLOR INSERT

Each gun is marked with a three-color three-dimensional seal. It represents an additional guarantee of authenticity and Italianity because it is present exclusively in original AIRCOM® guns.



SUPPORT

DO YOU NEED HELP?

We are at your disposal.



+39 0124 5154 44



aircom@aircom.it



Online support

AIRCOM



DISCOVER ALL PRODUCTS



Follow us



aircom.it