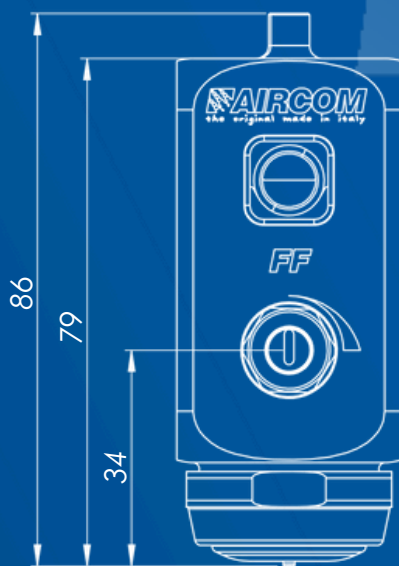



Instruction manual



mod. FF, FF-A, FF-SE, FF-SE-A
FF-Q, FF-Q-A, FF-Q-SE, FF-Q-SE-A

AVAILABLE MODELS

MODELS	100% STAINLESS STEEL	FOR HIGH CYCLES OF WORK	MANUAL ADJUSTMENT OF THE FAN	ADJUSTMENT OF THE FAN BY PLC	CAN BE EQUIPPED WITH AIRCOM® QRB2 AND AIRCOM® HSB
FF	★	★	★		
FF-A	★			★	
FF-SE	★		★		
FF-SE-A	★			★	
FF-Q*	★	★	★		★
FF-Q-A*	★	★		★	★
FF-Q-SE*	★		★		★
FF-Q-SE-A*	★			★	★
 *When using the Q, Q-A, Q-SE or Q-SE-A versions, the use of protective gloves is recommended.					

Index

Instruction Manual

Warnings	.04
Maintenance and cleaning	.04
Installation and start-up	.05
Technical data	.11
Troubleshooting	.12
Spare parts and components	.13
Certified quality	.23
Support	.23



WARNINGS!

Carefully read and follow all instructions and safety precautions before using the product.



MANUALS

Our manuals are available at aircom.it/en/support/manuals/
Or, by scanning the QR Code on this page.

WARNINGS

CORROSIVE PRODUCT WARNINGS

Our guns can atomize every type of fluid products. However, they are not designed to spray abrasive and/or corrosive products. If abrasive and/or corrosive products are used, guns with components made of the appropriate material can be ordered.

HEALTH HAZARD

Some atomized products may be harmful and cause irritation or health disorders. Careful reading of all labels and instructions on how to use the product are necessary. Use of the product is restricted to trained technical personnel, with the use of special safety glasses when adjusting the gun and, while the system is operating.

MAINTENANCE AND CLEANING

MAINTENANCE

Before any maintenance work, empty the gun and disconnect it from both, the compressed air supply, and the liquid supply. Use only original AIRCOM® accessories, spare parts, and related components: any other product not supplied by AIRCOM® is not approved or authorized. AIRCOM® is not liable for any damage caused by using non-original spare parts and accessories. Do not use mineral grease.



The use of protective gloves is recommended.

CLEANING

Use exclusively appropriate liquid cleaners with neutral pH 6-8. Do not use acids, alkaline solutions or other cleaning agents containing sodium hydroxide, which are aggressive for cleaning the exterior of the gun. Do not immerse the gun in liquid cleaners that may cause corrosion of the product. Clean all material passages by propagating water within the product circuit: inadequate cleaning can cause damages to the fan shape. While cleaning, avoid scratching the surfaces of the air nozzle holes and the needle.

Carry out a cleaning cycle before each use.

INSTALLATION

TECHNICAL SPECIFICATIONS

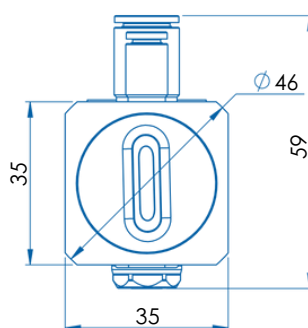
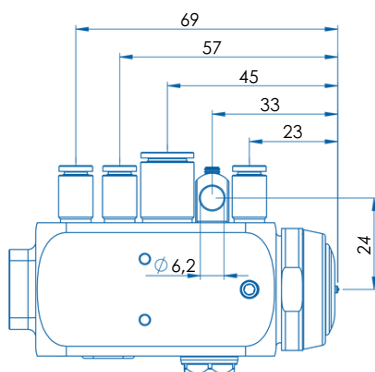
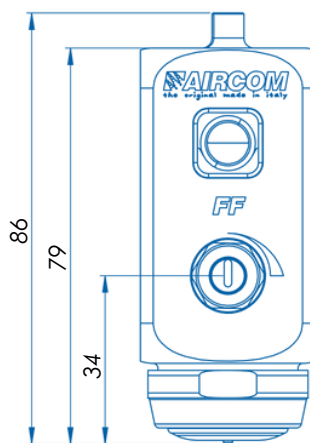
Connection hole diameter: Ø 6,2 mm

Size of pipe junctions:

- Control closing air inlet: **A1** = quick coupling pipe Ø 4 mm
- Control opening air inlet: **A2** = quick coupling pipe Ø 4 mm
- Atomization air inlet: **B** = quick coupling pipe Ø 8 mm
- Product inlet : **C** = quick coupling pipe Ø 4 mm

Gun weight: 0,55 kg

Gun size: see dimensioned views



VIDEO TUTORIALS ►

Our video tutorials are available at aircom.it/en/support/tutorials/
Or, by scanning the QR Code on this page.



INSTALLATION AND STARTUP

Before use, clean the gun carefully with a suitable product.
Carry out a cleaning cycle before each use.
The feeding must be done with dry, filtered and regulated air at constant pressure.
If using the product with the AIRCOM® HSB heater, use protective gloves to avoid scalds or burns.

A1

Pipe Ø ext. X Ø int. = 4 X 2
Control closing air inlet ≥ 4,0 bar

A2

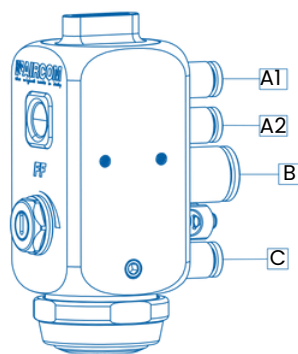
Pipe Ø ext. X Ø int. = 4 X 2
Control opening air inlet: 4 bar

B

Pipe Ø ext. X Ø int. = 8 X 6
Atomization air inlet: from 0,3 to 3 bar

C

Pipe Ø ext. X Ø int. = 4 X 2
Product inlet



mod. FF

A2

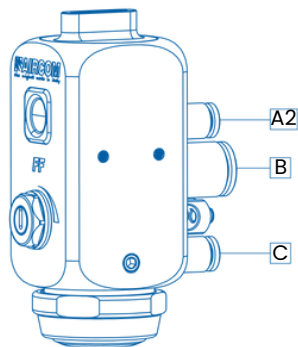
Pipe Ø ext. X Ø int. = 4 X 2
Control opening air inlet: 4 bar

B

Pipe Ø ext. X Ø int. = 8 X 6
Atomization air inlet: from 0,3 to 3 bar

C

Pipe Ø ext. X Ø int. = 4 X 2
Product inlet



mod. FF-SE

A1

Pipe Ø ext. X Ø int. = 4 X 2

Control closing air inlet $\geq 4,0$ bar

A2

Pipe Ø ext. X Ø int. = 4 X 2

Control opening air inlet: 4 bar

B

Pipe Ø ext. X Ø int. = 8 X 6

Atomization air inlet: from 0,3 to 3 bar

C

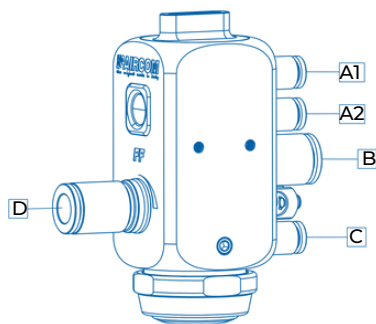
Pipe Ø ext. X Ø int. = 4 X 2

Product inlet

D

Ø ext. X Ø int. tube = 8 X 6

Air inlet fan adjustment: from 0.3 to 3 bar



mod. FF-A

A2

Pipe Ø ext. X Ø int. = 4 X 2

Control opening air inlet: 4 bar

B

Pipe Ø ext. X Ø int. = 8 X 6

Atomization air inlet: from 0,3 to 3 bar

C

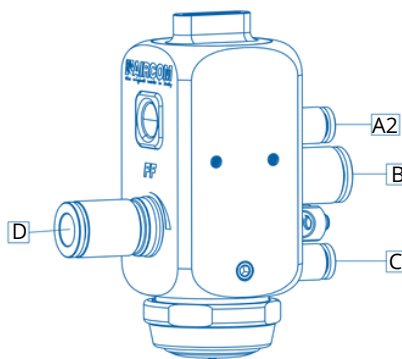
Pipe Ø ext. X Ø int. = 4 X 2

Product inlet

D

Ø ext. X Ø int. tube = 8 X 6

Air inlet fan adjustment: from 0.3 to 3 bar



mod. FF-SE-A

A1

QRB2 Entrance

Control closing air inlet $\geq 4,0$ bar

A2

QRB2 Entrance

Control opening air inlet: 4 bar

B

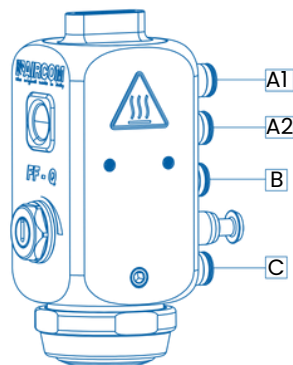
QRB2 Entrance

Atomization air inlet: from 0,3 to 3 bar

C

QRB2 Entrance

Product inlet



mod. FF-Q

A2

QRB2-SE Entrance

Control opening air inlet: 4 bar

B

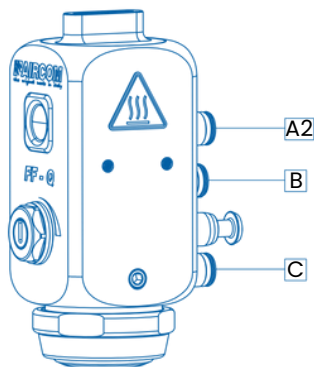
QRB2-SE Entrance

Atomization air inlet: from 0,3 to 3 bar

C

QRB2-SE Entrance

Product inlet



mod. FF-Q-SE

A1

QRB2 Entrance

Control closing air inlet $\geq 4,0$ bar

A2

QRB2 Entrance

Control opening air inlet: 4 bar

B

QRB2 Entrance

Atomization air inlet: from 0,3 to 3 bar

C

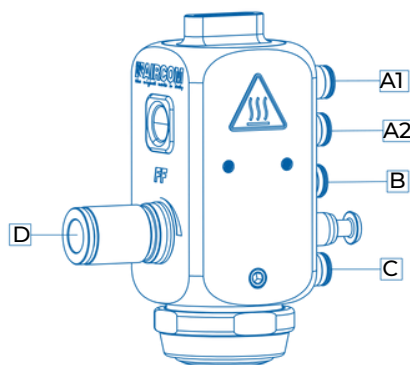
QRB2 Entrance

Product inlet

D

\varnothing ext. X \varnothing int. tube = 8 X 6

Air inlet fan adjustment: from 0.3 to 3 bar



mod. FF-Q-A

A2

QRB2-SE Entrance

Control opening air inlet: 4 bar

B

QRB2-SE Entrance

Atomization air inlet: from 0,3 to 3 bar

C

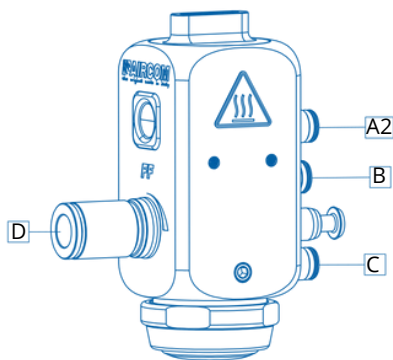
QRB2-SE Entrance

Product inlet

D

\varnothing ext. X \varnothing int. tube = 8 X 6

Air inlet fan adjustment: from 0.3 to 3 bar



mod. FF-Q-SE-A

ADJUSTMENT SEQUENCE

1. Lock the gun to the system via the fixing bracket e orient the head in the direction of appropriate coverage.

In case of using the versions -Q, -Q-A, Q-SE o Q-SE-A, lock the QRB2 or QRB2-SE block first to the system and hook up then the gun.

2. Connect the air hoses atomization of the control air and the product to the indicated connections on the previous page.

3. Act on the control air A2 to release the product from the nozzle, as indicated on the previous page.

4. Act on the pump pressure to obtain the necessary quantity of product coming out of the gun nozzle.

5. Act on the adjustment screw to obtain the desired atomization fan.

TECHNICAL DATA





HEAD 1347-U14

HEAD Ø NOZZLE	FLUID FLOW (g/min)	ATOMIZATION PRESSURE (kg/cm ²)	AIR CONSUMP. (L/min)	CONE WIDTH at 19 cm (cm)	MIN FAN WIDTH	MAX FAN WIDTH
Ø 0,6	156	0.7	51	26°	36°	60°
Ø 0,8	262	0.85	80			
Ø 1,2	428	1.15	95			
Ø 1,5	552	1.40	106			
Ø 2,5	634	2.25	157			
Ø 3,0	793	2.7	182			

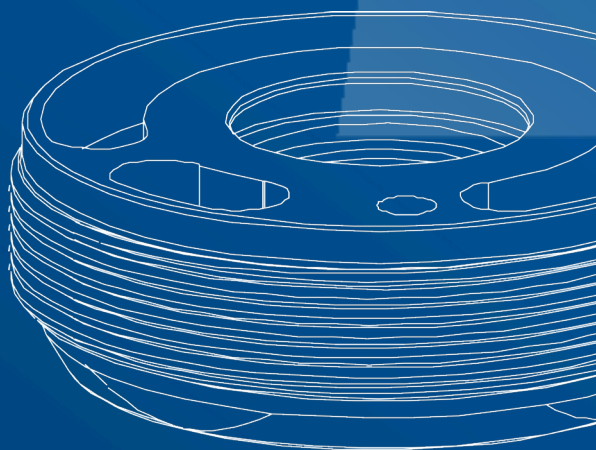
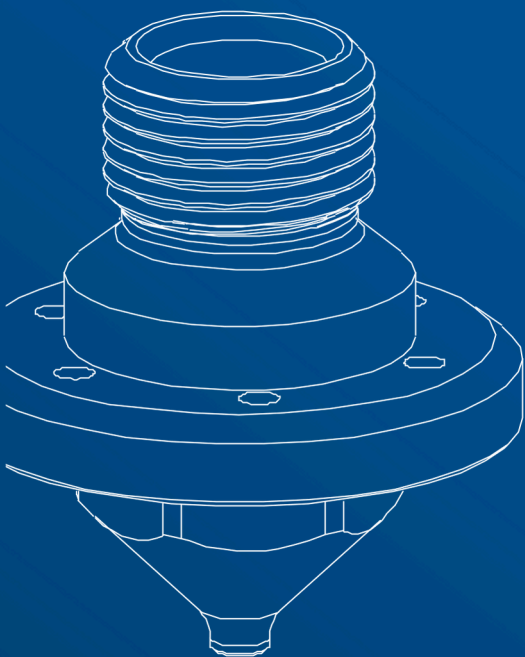
NOTES

Pump pressure 0.5 to 0.6 Kg/cm².
Liquid used for testing: water. Ford cup viscosity 4 = 11 sec.

TROUBLESHOOTING

Anomaly	Problem / Solution
No atomization	No pressure is getting to the gun Check air system
	Plunger part. [1347-G32] worn out Replace plunger part. [1347-G32] worn out
	The head part. [1347-U14], the nozzle part. [1347-U7] and the needle part. [1347-U17] are worn out. Replace the head part. [1347-U14], the nozzle part. [1347-U7] and the needle part. [1347-U17]
	The product is exceeding the amount needed Reduce the product passage
	Lack of product (flow rate too low) Add product or reduce atomization air pressure
	Missing product in tank or clogged pipes Fill tank or clean up with solvent
Leakage from the nozzle	The nozzle part. [1347-U7] and the needle part. [1347-U17] are worn out. Replace the nozzle part. [1347-U7] and the needle part. [1347-U17]

Spare parts and components

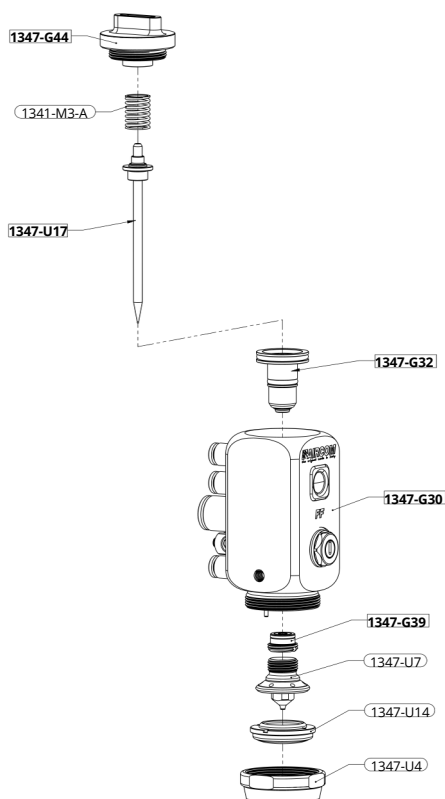


SPARE PARTS

DETAILS LIST

mod. FF

- 1341-M3-A** [x1] Spring
- 1347-G30** [x1] Body assembled
- 1347-G32** [x1] Mounted plunger
- 1347-G39** [x1] Gasket kit
- 1347-G44** [x1] Mounted cap
- 1347-U4** [x1] Ferrule
- 1347-U7** [x1] Nozzle
- 1347-U14** [x1] Head
- 1347-U17** [x1] Complete needle



NOTE

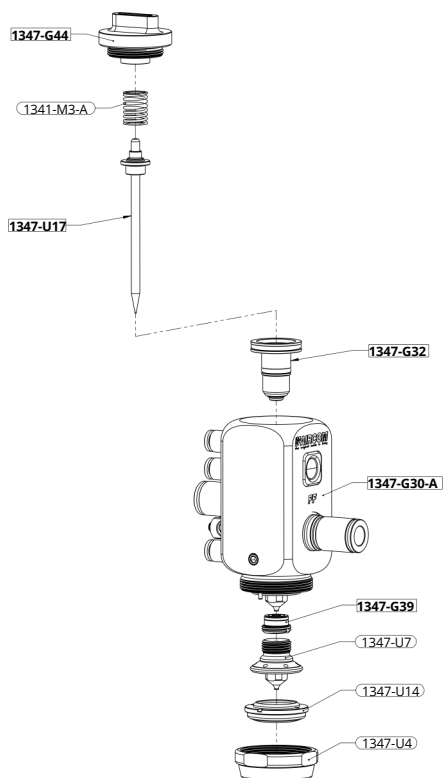
For the heads compatible with the model you can refer to the CNN table below.

SPARE PARTS

DETAILS LIST

mod. FF-A

- 1341-M3-A** [x1] Spring
- 1347-G30-A** [x1] Body assembled
- 1347-G32** [x1] Mounted plunger
- 1347-G39** [x1] Gasket kit
- 1347-G44** [x1] Mounted cap
- 1347-U4** [x1] Ferrule
- 1347-U7** [x1] Nozzle
- 1347-U14** [x1] Head
- 1347-U17** [x1] Complete needle



NOTE

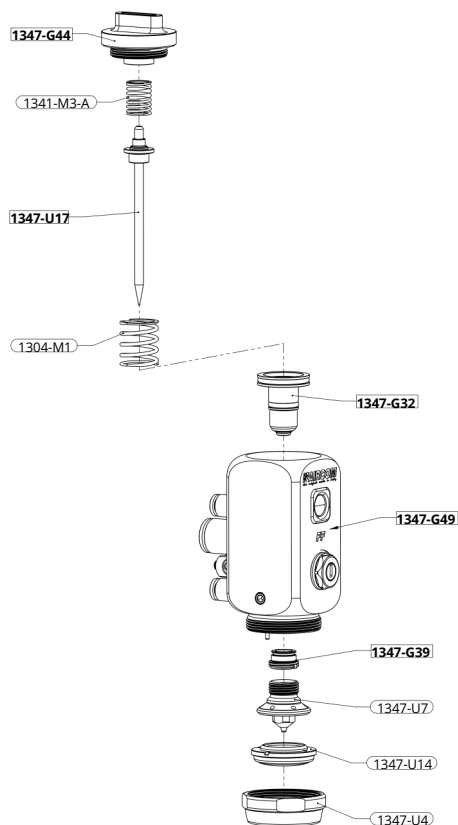
For the heads compatible with the model you can refer to the CNN table below.

SPARE PARTS

DETAILS LIST

mod. FF-SE

- 1341-M3-A** [x1] Spring
- 1347-G32** [x1] Mounted plunger
- 1347-G39** [x1] Gasket kit
- 1347-G44** [x1] Mounted cap
- 1347-G49** [x1] Body assembled
- 1304-M1** [x1] Spring
- 1347-U4** [x1] Ferrule
- 1347-U7** [x1] Nozzle
- 1347-U14** [x1] Head
- 1347-U17** [x1] Complete needle



NOTE

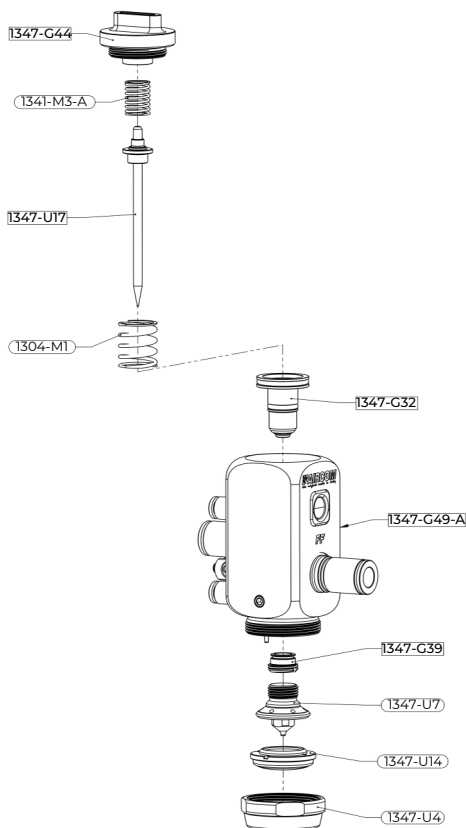
For the heads compatible with the model you can refer to the CNN table below.

SPARE PARTS

DETAILS LIST

- 1341-M3-A** [x1] Spring
- 1347-G32** [x1] Mounted plunger
- 1347-G39** [x1] Gasket kit
- 1347-G44** [x1] Mounted cap
- 1347-G49-A** [x1] Body assembled
- 1304-M1** [x1] Spring
- 1347-U4** [x1] Ferrule
- 1347-U7** [x1] Nozzle
- 1347-U14** [x1] Head
- 1347-U17** [x1] Complete needle

mod. FF-SE-A



NOTE

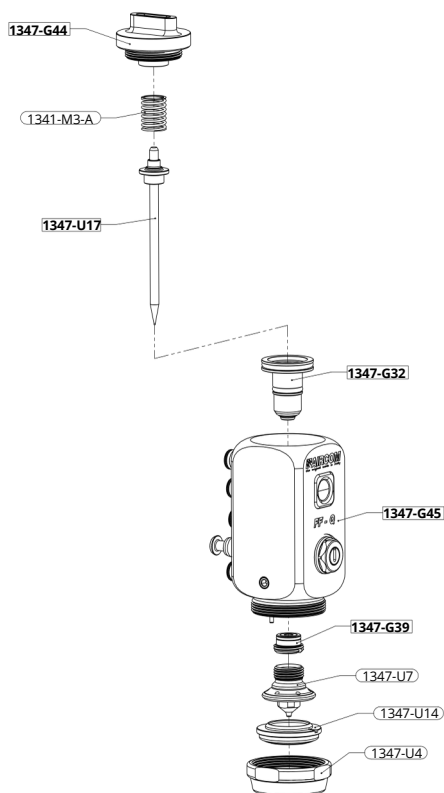
For the heads compatible with the model you can refer to the CNN table below.

SPARE PARTS

DETAILS LIST

mod. FF-Q

- 1341-M3-A** [x1] Spring
- 1347-G32** [x1] Mounted plunger
- 1347-G39** [x1] Gasket kit
- 1347-G44** [x1] Mounted cap
- 1347-G45** [x1] Body assembled
- 1347-U4** [x1] Ferrule
- 1347-U7** [x1] Nozzle
- 1347-U14** [x1] Head
- 1347-U17** [x1] Complete needle



NOTE

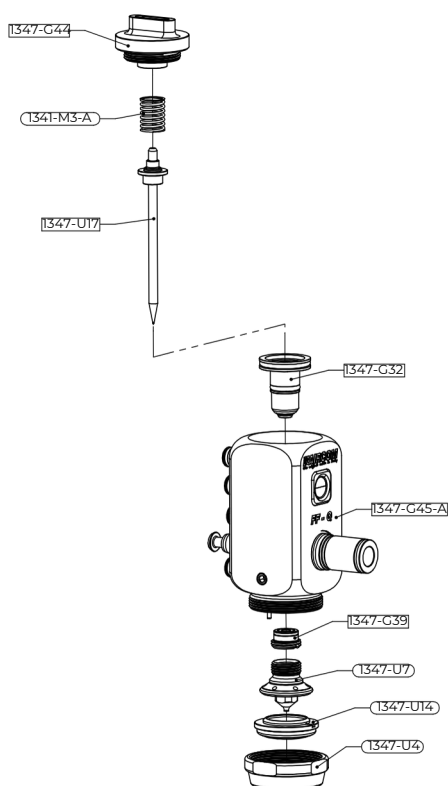
For the heads compatible with the model you can refer to the CNN table below.

SPARE PARTS

DETAILS LIST

mod. FF-Q-A

- 1341-M3-A** [x1] Spring
- 1347-G32** [x1] Mounted plunger
- 1347-G39** [x1] Gasket kit
- 1347-G44** [x1] Mounted cap
- 1347-G45-A** [x1] Body assembled
- 1347-U4** [x1] Ferrule
- 1347-U7** [x1] Nozzle
- 1347-U14** [x1] Head
- 1347-U17** [x1] Complete needle



NOTE

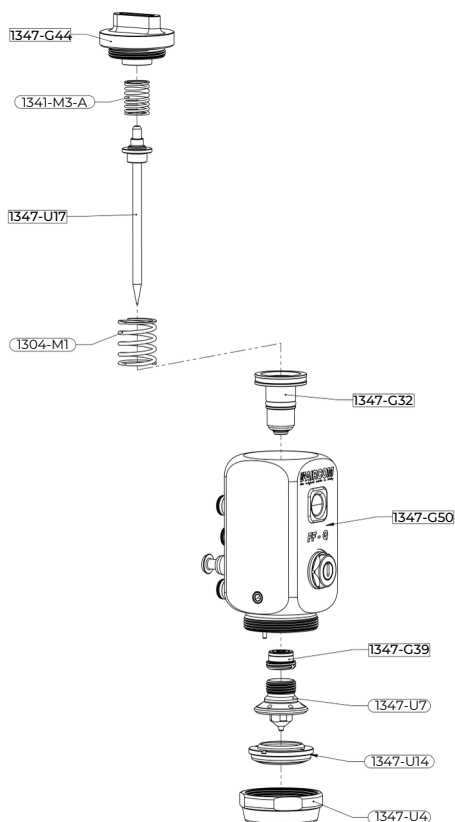
For the heads compatible with the model you can refer to the CNN table below.

SPARE PARTS

DETAILS LIST

mod. FF-Q-SE

- 1341-M3-A** [x1] Spring
- 1347-G32** [x1] Mounted plunger
- 1347-G39** [x1] Gasket kit
- 1347-G44** [x1] Mounted cap
- 1347-G50** [x1] Body assembled
- 1304-M1** [x1] Spring
- 1347-U4** [x1] Ferrule
- 1347-U7** [x1] Nozzle
- 1347-U14** [x1] Head
- 1347-U17** [x1] Complete needle



NOTE

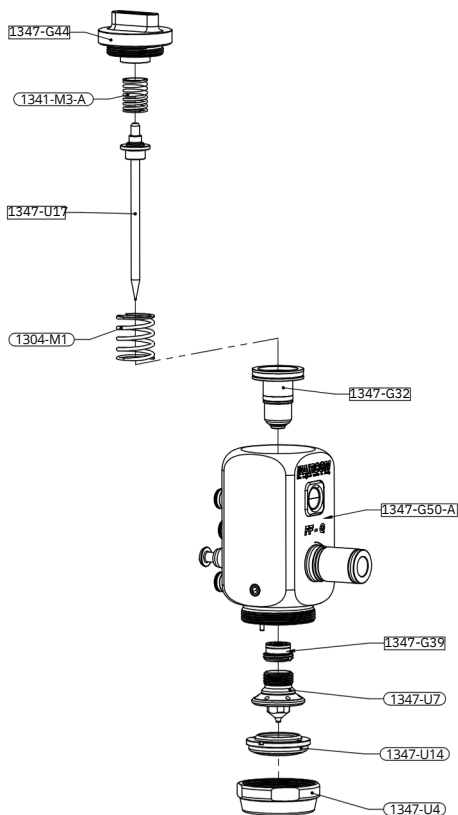
For the heads compatible with the model you can refer to the CNN table below.

SPARE PARTS

DETAILS LIST

mod. FF-Q-SE-A

- 1341-M3-A** [x1] Spring
- 1347-G32** [x1] Mounted plunger
- 1347-G39** [x1] Gasket kit
- 1347-G44** [x1] Mounted cap
- 1347-G50-A** [x1] Body assembled
- 1304-M1** [x1] Spring
- 1347-U4** [x1] Ferrule
- 1347-U7** [x1] Nozzle
- 1347-U14** [x1] Head
- 1347-U17** [x1] Complete needle




NOTE

For the heads compatible with the model you can refer to the CNN table below.

COMPATIBLE CNN

Cap-Nozzle-Needle

1347-U14-A	CAP	NOZZLE	NEEDLE
	1347-U14-0.6	1347-U7-0.6	1347-U17-0.6
	1347-U14-0.8	1347-U7-0.8	1347-U17-0.8
	1347-U14-1.2	1347-U7-1.2	1347-U17-1.2
	1347-U14-1.5	1347-U7-1.5	1347-U17-1.5
	1347-U14-2.5	1347-U7-2.5	1347-U17-2.5
	1347-U14-3.0	1347-U7-3.0	1347-U17-3.0

CERTIFIED QUALITY

CERTIFICATIONS

The product, with a body entirely in stainless steel and specific OR/sealings, complies with FDA requirements.



THREE-COLOR INSERT

Each gun is marked with a three-color three-dimensional seal. It represents an additional guarantee of authenticity and Italianity because it is present exclusively in original AIRCOM® guns.



SUPPORT

DO YOU NEED HELP?

We are at your disposal.



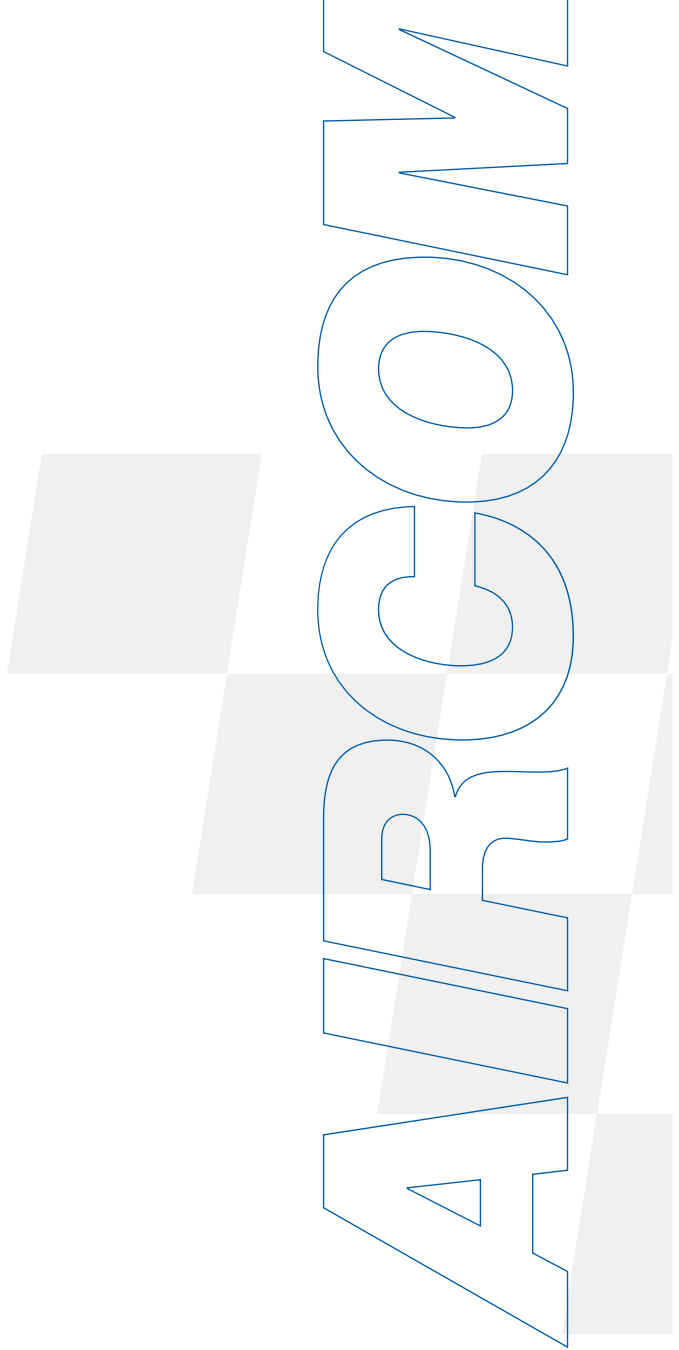
+39 0124 5154 44



aircom@aircom.it



Online support





DISCOVER ALL PRODUCTS



Follow us



aircom.it