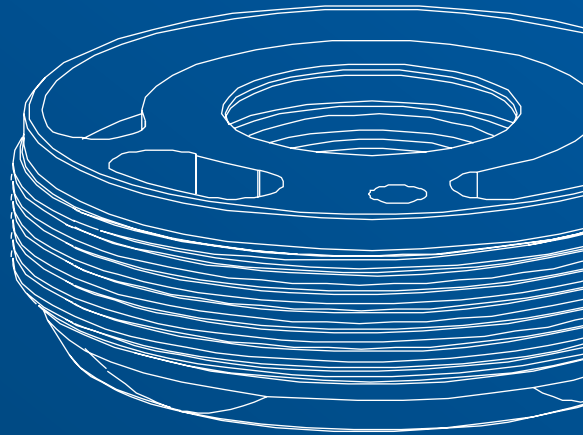
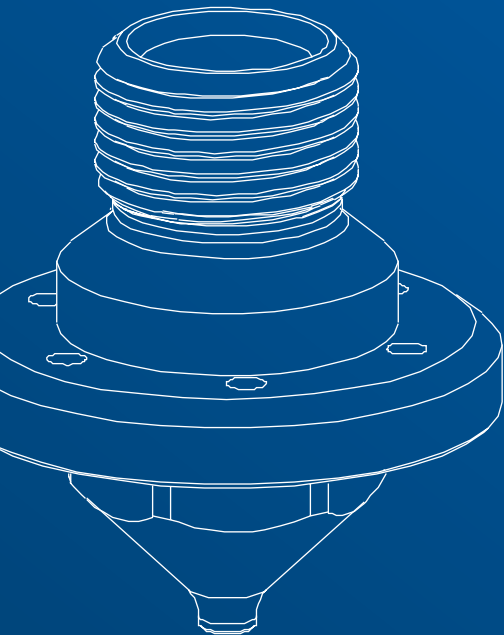
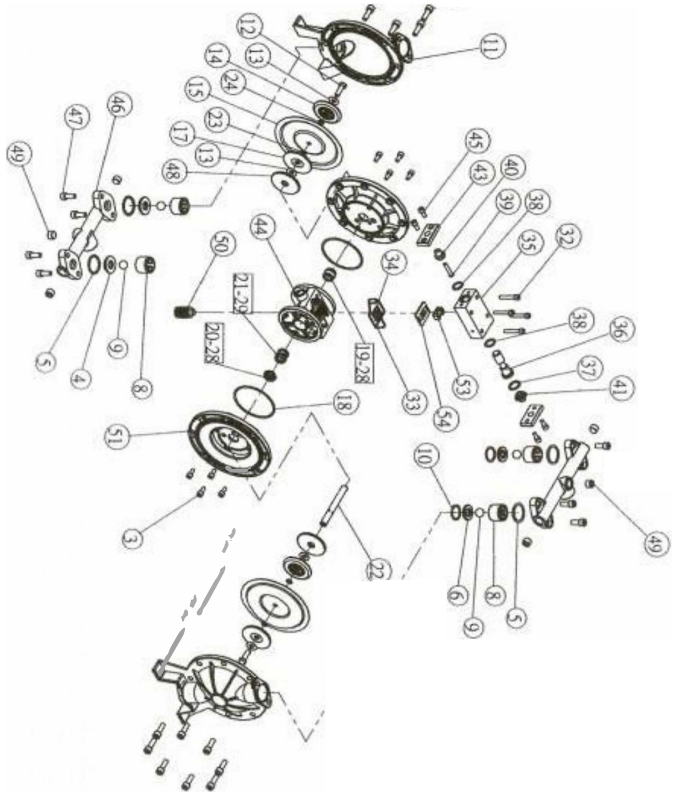


# Spare parts and components



# SPARE PARTS

- 1** Hex screws
- 3** Hex screws
- 4** Bottom valve seat
- 5** PTFE O-Rings
- 6** Upper valve seat
- 7** Top valve
- 8** Bottom valve
- 8** SUS sphere
- 10** O-Ring seal
- 11** External pump cover
- 12** Hex screws
- 13** Washer
- 14** External plate
- 15** Membrane
- 17** Internal plate
- 18** O-Ring seal
- 19** A-shaft valve
- 20** B shaft valve
- 21** Interr. post
- 22** Post
- 23** O-Ring seal
- 25** O-Ring seal
- 32** Hex screws
- 33** Exchanger gasket
- 34** Exchanger gasket
- 35** Exchanger body
- 36** Exchanger shaft
- 37** Spindle seal
- 38** Gasket
- 39** Restart piston
- 40** Air valve cap A
- 41** Air valve cap B
- 42** O-Rings
- 43** Exchanger cover
- 44** Body Pump
- 45** Hex screws
- 46** Collector
- 47** Hex screws
- 48** Spindle plate
- 49** Hex cap
- 50** Silencer
- 51** Inner lid
- 53** Valve holder
- 54** Exchanger base



# DISPOSAL

---

If, for any reason, it is intended to put the painting unit out of service, it is necessary to observe some fundamental rules aimed at safeguarding the environment as per the provisions of the law currently in force.

Sheaths, flexible ducts, plastic or non-metallic material components must be disassembled and disposed of separately at the appropriate differentiated collection centres.

The machine DOES NOT CONTAIN POLLUTING OILS but the waste paints must in any case be disposed of at authorized consortia. Do not throw in common waste.

Do not disperse in the environment.

# SUPPORT

---

## DO YOU NEED HELP?

We are at your disposal.



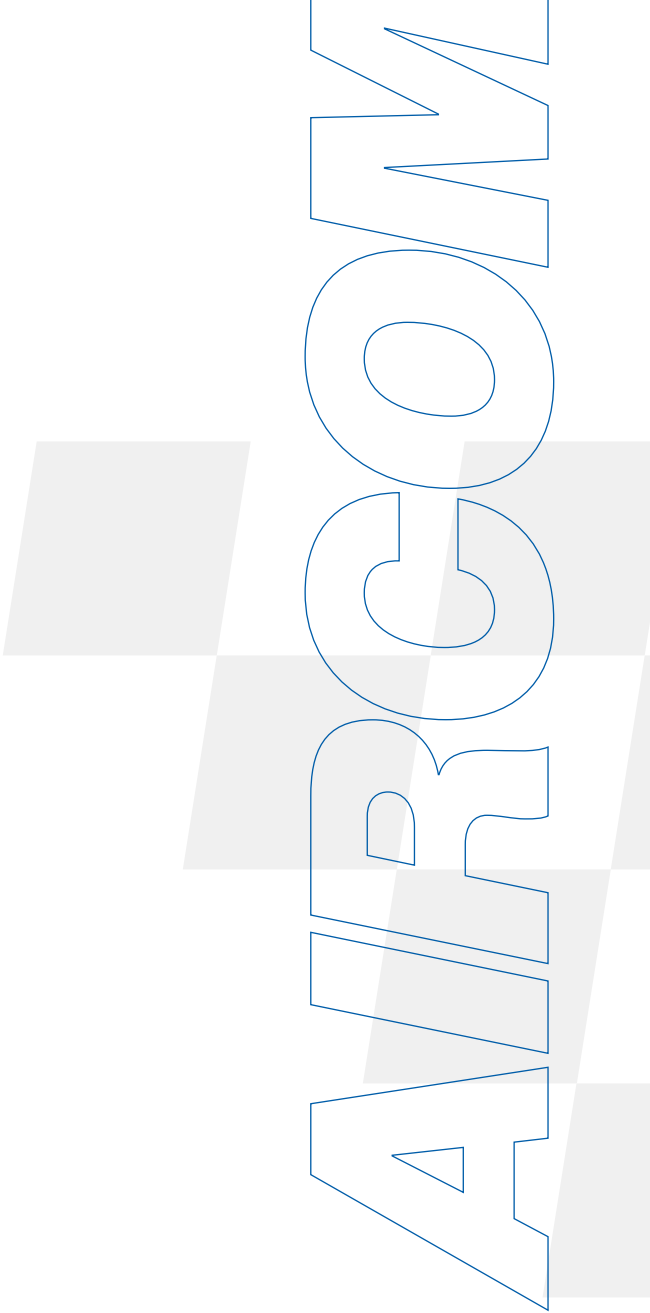
+39 0124 5154 44



[aircom@aircom.it](mailto:aircom@aircom.it)



Online support



AIRCOM



DISCOVER ALL PRODUCTS



Follow us



[aircom.it](http://aircom.it)