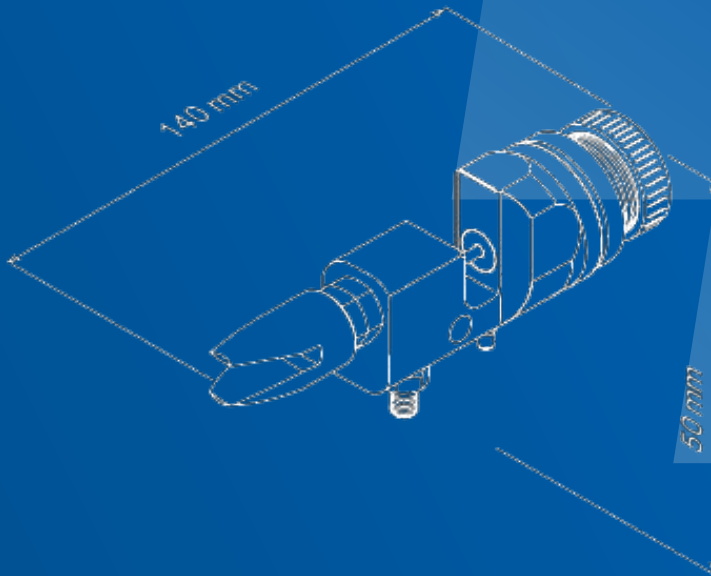


Instruction manual



mod. A16, A16 double entry

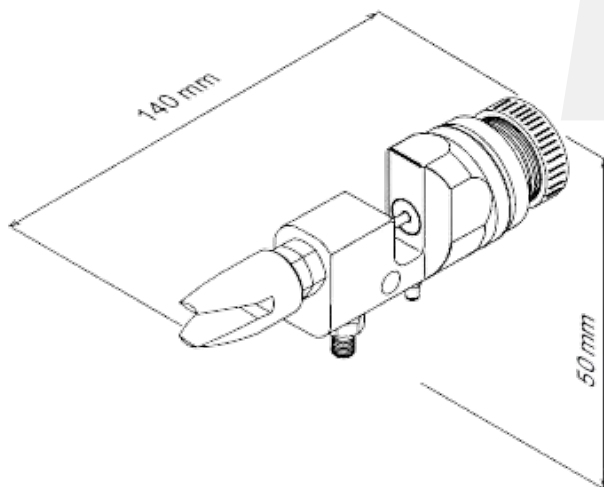
AVAILABLE MODELS

mod. A16

It allows to obtain uniform painted surfaces

mod. A16 double entry

It allows to obtain uniform painted surfaces, with double entry



Index

Instruction Manual

Warnings	.04
Maintenance and cleaning	.04
Installation and start-up	.05
Technical data	.08
Troubleshooting	.10
Spare parts and components	.11
Disposal	.14
Support	.14



WARNINGS!

Carefully read and follow all instructions and safety precautions before using the product.



MANUALS

Our manuals are available at aircom.it/en/support/manuals/
Or, by scanning the QR Code on this page.

WARNINGS

CORROSIVE PRODUCTS

Solvents such as trichlorethane and chloromethylene (dichlorethane) can chemically react with the aluminum that makes up much of the gun and cause dangerous explosions. Do not use the gun with halogenated hydrocarbon solvents (ethyl chloride, trichloride) which could cause explosions on contact with aluminum parts.

HEALTH HAZARD

Some sprayed chemicals can be harmful and cause irritation or health problems. Careful reading of all labels and instructions for use of the product is required. The use of the product is reserved to trained technical personnel, with the use of protective goggles in case of adjustments of the gun with the system functioning.

MAINTENANCE AND CLEANING

MAINTENANCE

Routine maintenance does not require particular interventions as his components are free from lubrication. To ensure a flawless operation of the gun over time it needs to be cleaned daily or in any case at each end work to prevent residue dried product inside the paint circuit. To proceed to maintenance, close the air of supply to the system, discharge the residual pressure in the paint tube, remove the air tube from the gun e remove the paint tube from the gun.

CLEANING

Discharge the pressure, disassemble the finger protection and the nozzle. Check that the packings are not worn-out, otherwise replace them. Carefully clean the nozzle, dip it in thinner to dissolve residue inside it. Blow commpressed air throught it from the front to eliminate all traces of materiai. The nozzle must be mounted back on with its packing. Disassemble the diffuser and thoroughly clean with a brush, in particular the ball seat.

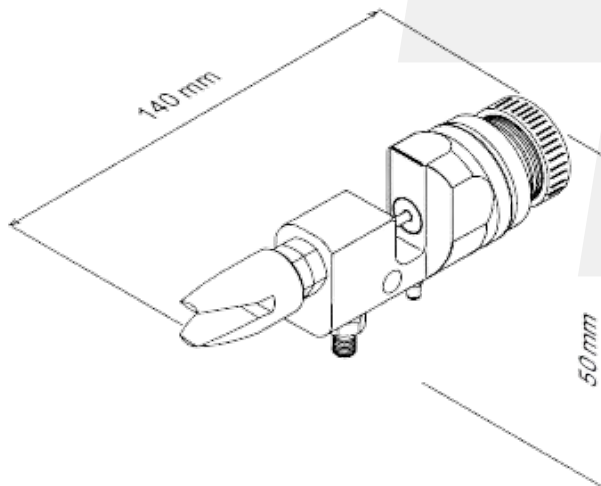
INSTALLATION

TECHNICAL SPECIFICATIONS

Gun size: see dimensioned views

Usage

The gun must be supplied with a maximum pressure of 250 bar.





INSTALLATION AND STARTUP

Before using a new gun or a new product, clean the gun thoroughly with an appropriate solvent. Powering should be done with dry, filtered air and regulated to constant pressure.

DIRECTIONS FOR GUN OPERATION

1

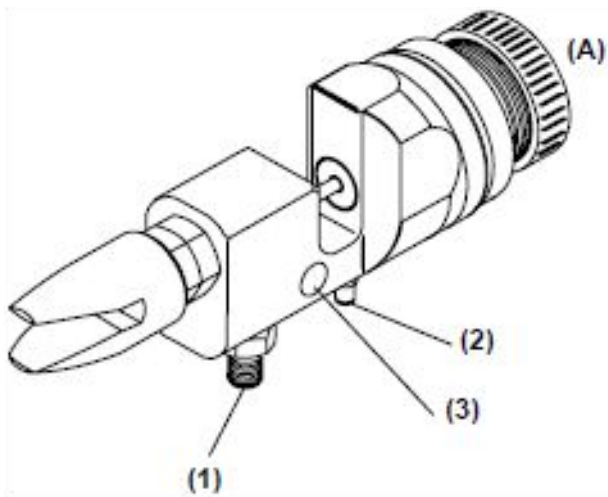
Pipe $\varnothing 6 \div 8$
Product inlet

2

Pipe $\varnothing 6 \div 8$
Atomization air inlet

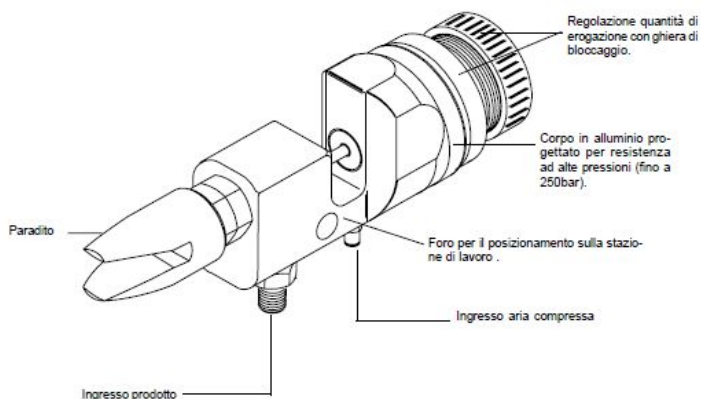
3

$\varnothing 8$ mm
Hole for placement
on the workstation



ADJUSTMENT SEQUENCE

1. Connect the paint inlet hose to the gun connection (1).
2. Select the most suitable nozzle according to the job to be performed.
3. Connect the air (which allows you to start or stop the delivery of the product) to the gun connection (2).
4. Connect the automatic nozzle to the structure of the dispensing system by inserting a $\varnothing 8\text{mm}$ bar in the hole provided in the nozzle (3) and then lock it using the grub screw.
5. Adjust the quantity of product to be dispensed by turning the handwheel (A). range.







TECHNICAL DATA

PRODUCTS	NOZZLE	SPRAY ANGLE	ORIFICE	FAN AT 30 CM
TRANSPARENT AND PIGMENTED PAINTS FINE ENAMELS	7x20	20°	0,15	13,5
	7x40	40°	0,15	16,5
	9x20	20°	0,23	14
	9x40	40°	0,23	17,5
	9x60	20°	0,23	22,5
SYNTHETIC AND POLYURETHANE NITRO PAINTS	11x10	10°	0,28	9
	11x20	20°	0,28	14,5
	11x40	40°	0,28	18,5
	13x10	20°	0,33	15,5
	13x40	40°	0,33	20
	13x40	60°	0,33	26,5
ANTI-RUST	15x20	20°	0,38	16,5
	15x40	40°	0,38	21,5
THIXOTROPIC SPRAY FILLER FILLED BASES INORGANIC ZINC WATER-BASED PAINTS HIGH SOLID PAINTS WITH GLUES AND FILLERS	18x10	10°	0,46	12,5
	18x20	20°	0,46	16,5
	18x40	40°	0,46	20,5
	18x60	60°	0,46	29,5

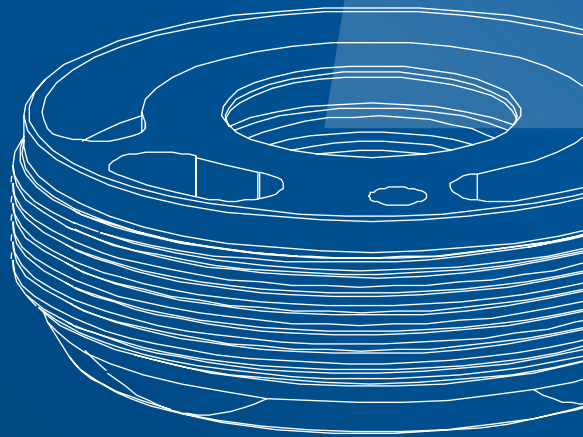
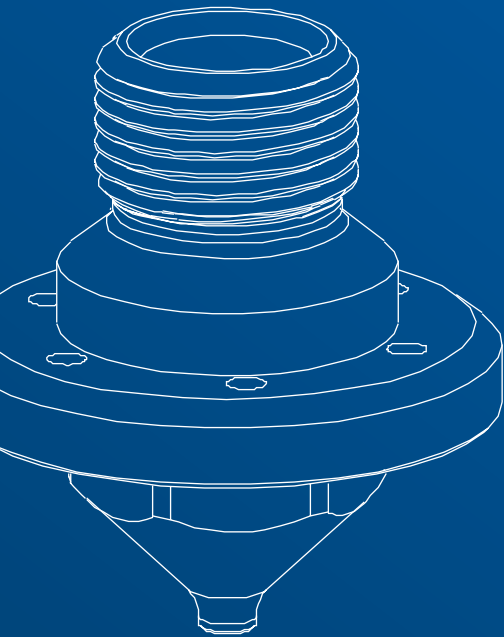
TECHNICAL DATA

PRODUCTS	NOZZLE	SPRAY ANGLE	ORIFICE	FAN AT 30 CM
THIXOTROPIC SPRAY FILLER FILLED BASES INORGANIC ZINC WATER-BASED PAINTS HIGH SOLID PAINTS WITH GLUES AND FILLERS	21x10	10°	0,53	13,5
	21x20	20°	0,53	18,5
	21x40	40°	0,53	21,5
	21x60	60°	0,53	32,5
	26x10	10°	0,66	15,5
	26x20	20°	0,66	22
	26x40	40°	0,66	30,5
	26x60	60°	0,66	38
	31x10	10°	0,79	15,3
	31x20	20°	0,79	22
	31x40	40°	0,79	30,5
	31x60	60°	0,79	37,5
	41x40	40°	1,04	30,5
	41x60	60°	1,04	37,5

TROUBLESHOOTING

Anomaly	Problem / Solution
<p>No atomization</p>	<p>No pressure reaches the gun <i>Check the air system</i></p>
	<p>Dirty or worn nozzle <i>Carefully clean the dirty nozzle. Replace nozzle if worn.</i></p>
	<p>There is more product than necessary. <i>Reduce the passage of the product</i></p>
	<p>No product (flow rate too low) <i>Add product or reduce atomization air pressure</i></p>
	<p>No product in the tank or clogged pipes. <i>Fill the tank or clean with solvent</i></p>
<p>Nozzle leak</p>	<p>Dirty or worn ball or ball seat. <i>Carefully clean parts from gun. Replace ball and ball seat if worn.</i></p>
<p>Paint comes out of the stuffing box</p>	<p>Worn stuffing box packing <i>Replace the stuffing box, releasing the pressure from the system and disassembling the finger guard, the nozzle, the sleeve body, the rear cap, the spring, the M3 nut. With an 8mm wrench unscrew the awl from the front of the gun. Remove the piston, unscrew the gland nut, remove the pressure wedge and the gland and replace it with a new one.</i></p>

Spare parts and components

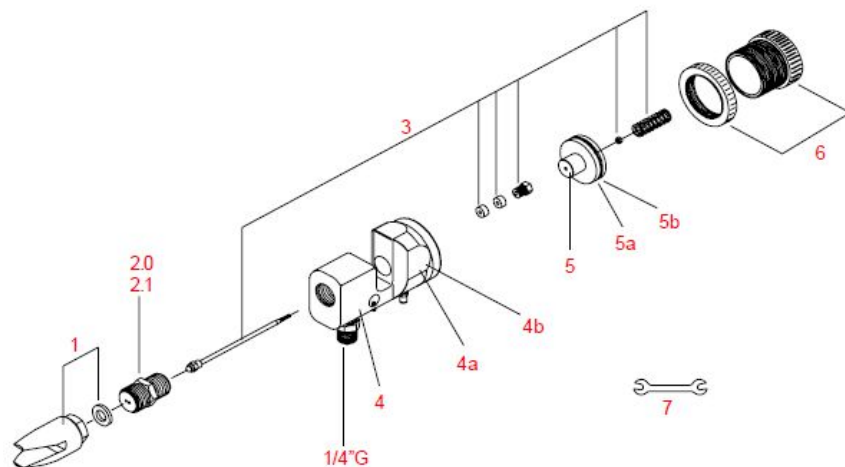


SPARE PARTS

DETAILS LIST

mod. A16

- 1** [x1] Finger protection
- 2.0** [x1] 2-hole sleeve
- 2.1** [x1] 1-hole sleeve
- 3** [x1] Awl kit
- 4** [x1] Body group
- 4a** [x1] Gasket
- 4b** [x1] Gasket
- 5** [x1] Piston assembly
- 5a** [x1] Gasket
- 5b** [x1] Gasket
- 6** [x1] Needle stroke adjustment unit
- 7** [x1] Key

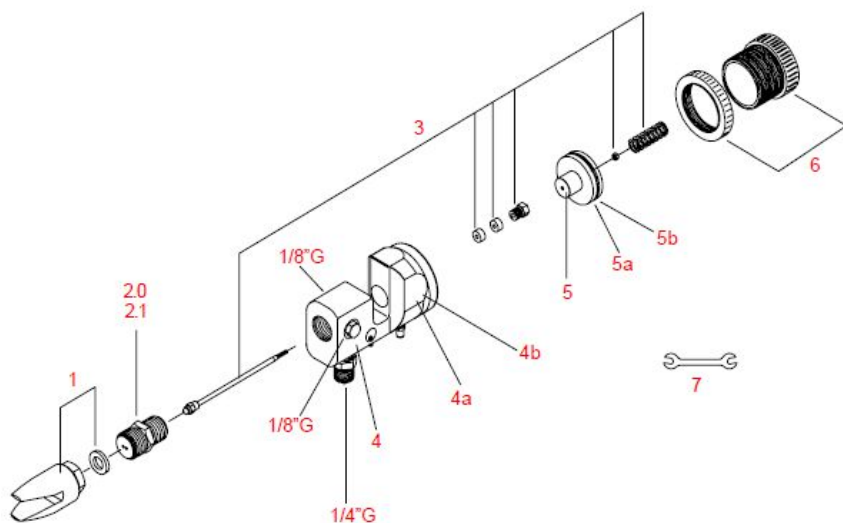


SPARE PARTS

DETAILS LIST

mod. A16 double entry

- 1** [x1] Finger protection
- 2.0** [x1] 2-hole sleeve
- 2.1** [x1] 1-hole sleeve
- 3** [x1] Awl kit
- 4** [x1] Body group
- 4a** [x1] Gasket
- 4b** [x1] Gasket
- 5** [x1] Piston assembly
- 5a** [x1] Gasket
- 5b** [x1] Gasket
- 6** [x1] Needle stroke adjustment unit
- 7** [x1] Key



DISPOSAL

If, for any reason, it is intended to put the painting unit out of service, it is necessary to observe some fundamental rules aimed at safeguarding the environment as per the provisions of the law currently in force.

Sheaths, flexible ducts, plastic or non-metallic material components must be disassembled and disposed of separately at the appropriate differentiated collection centres.

The machine DOES NOT CONTAIN POLLUTING OILS but the waste paints must in any case be disposed of at authorized consortia.

SUPPORT

DO YOU NEED HELP?

We are at your disposal.



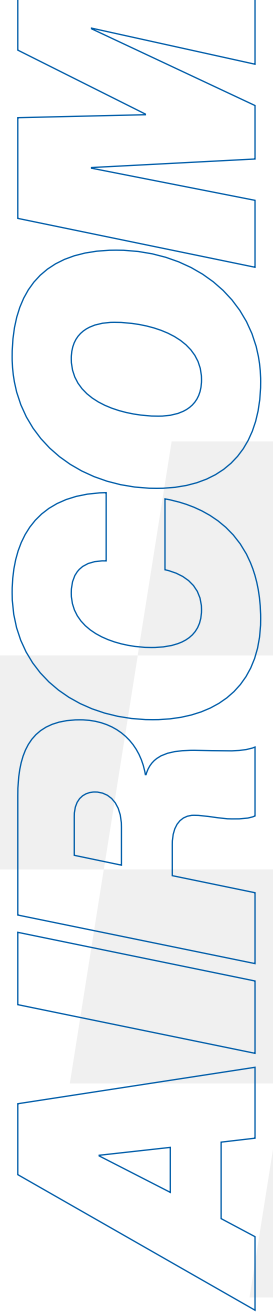
+39 0124 5154 44



aircom@aircom.it



Online support

The logo for AIRCOM features the word "AIRCOM" in a large, blue, outlined, sans-serif font. The letters are positioned vertically on the right side of the page. Behind the text is a decorative background consisting of a grid of squares in shades of light gray and white, with some squares tilted at an angle to create a dynamic, geometric pattern.

AIRCOM



DISCOVER ALL PRODUCTS



Follow us



aircom.it