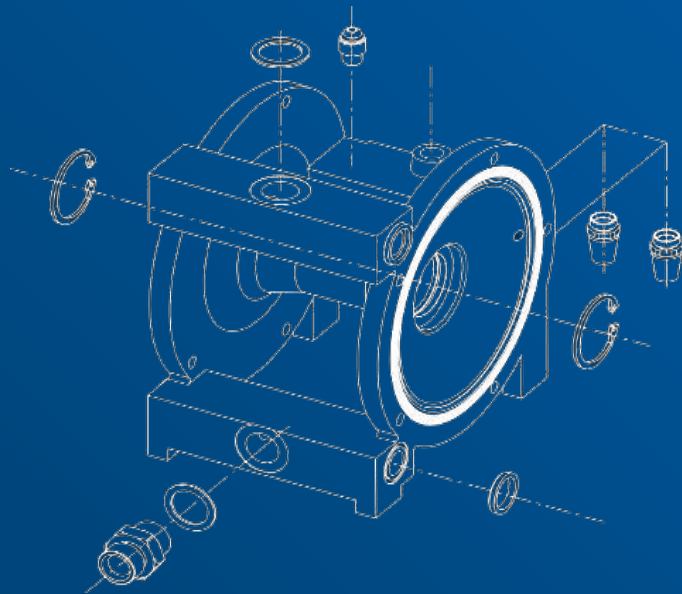


Instruction manual

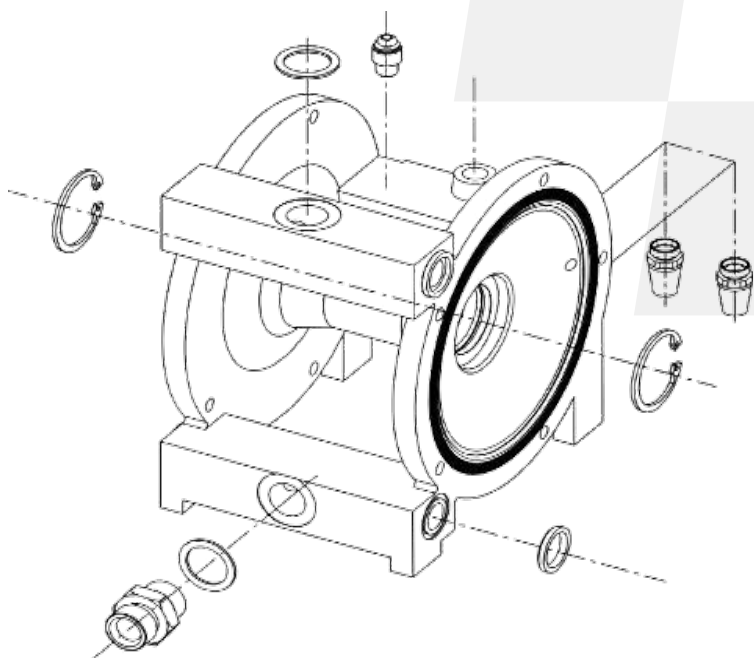


mod. AST48

AVAILABLE MODELS

mod. AST48

Double diaphragm pump with
flow rate of 48 l/min



Index

Instruction manual

<i>Packing</i>	<i>.04</i>
<i>Description</i>	<i>.05</i>
<i>Technical features</i>	<i>.06</i>
<i>Installation</i>	<i>.07</i>
<i>Safety</i>	<i>.08</i>
<i>Cleaning</i>	<i>.08</i>
<i>Maintenance</i>	<i>.09</i>
<i>Norms for maintenance</i>	<i>.09</i>
<i>Pressure discharge</i>	<i>.10</i>
<i>Storing</i>	<i>.10</i>
<i>Spare parts and components</i>	<i>.11</i>
<i>Disposal</i>	<i>.13</i>
<i>Support</i>	<i>.13</i>



ATTENZIONE!

Leggere e seguire tutte le istruzioni e le precauzioni di sicurezza prima di utilizzare il prodotto.



MANUALI

Puoi consultare i nostri manuali su www.aircom.it/manuali
Oppure, scannerizza il QR Code qui a lato.

PACKING

The pump is packed in a cardboard box. All components supplied as standard are placed in the same package.
The weight of the equipment plus the packaging is ~30 Kg.

STORAGE

During transport and storage, make sure that temperatures between -15°C and 40°C or 50°C for short periods not exceeding 24 hours are not exceeded, which could damage the unit itself.
If the unit is to be stored, make sure it is stored in places with humidity between 30% and 80%.

PLATE DATA

On the front plate, the equipment bears the manufacturer's identification plate and the 2006/42/CE STANDARDS compliance plate, also represented below.

The plate must not, under any circumstances, be removed, even if the equipment is resold. For any communication with the manufacturer, always quote the serial number (shown on the plate itself). On the body of the pump there are some pictograms indicating safety warnings which must be carefully observed by anyone preparing to use the painting unit. Failure to comply with the provisions relieves the manufacturer from any damage or injury to people or things that could derive from it and makes the operator himself solely responsible towards the competent bodies. Replace the nameplate and any removed, damaged or illegible stickers.



DESCRIPTION

The equipment dealt with in this manual is a low pressure TRANSFER pump, which allows the transfer of liquids, paint and gluing products. Characterized by its versatility, precision, practicality and economy, this machine uses a double diaphragm pneumatic pump, air pressure regulation unit.

Product outlet F3/8"



Product inlet F3/8"

TECHNICAL FEATURES

The paint pump must be supplied with compressed air from a compressor at a pressure between 2 and 8 bar. The air consumption is at least 36l/min. The compressed air allows the pump diaphragms to suck the material and feed the material delivery pipe. Diaphragms, balls, ball seats and gaskets are built with the highest quality materials.

FEATURE	AST48
CAPACITY	36 L/Min
PRESSURE RATIO	80 ml
OPERATING PRESSURE	1:1
NOMINAL PRESSURE	8.3 bar
DROP TANK	0.8 - 8.3 bar
PREVALENCE	1.5 - 6 bar
AIR OUTLET FITTING	F1/4"
PAINT INLET FITTING	F3/8"
NOZZLE	240 l/min
WEIGHT	1,5 mm
SOUND PRESSURE LEVEL	6m wet/ 3,7 m dry
PEAK VALUE	-5 +60°

INSTALLATION

The installation of the equipment does not require any special precautions, it is recommended to follow the instructions given below. Do not place the equipment near flammable products. The paint container must be placed near the equipment.

It is recommended to supply with a pressure of no more than 8.3 bar. Always work on the equipment protected by gloves, protective masks, filters for breathing with activated carbon, clothing suitable for body protection.

- The pump is also used with paint products or solvents, bear in mind that these are highly flammable, therefore use the system in well-ventilated environments and avoid any action that could cause fires (example: smoking, high temperature slag or shavings, sparks or any electrical risk).
- CHECK the chemical compatibility of the products to be used on their safety data sheets.
- The use of products containing organic solvents can cause poisoning due to the emission of toxic vapours.
- DO NOT USE with food or medicines.
- DO NOT EXCEED the maximum working pressures indicated
- BEFORE any disassembly, cleaning, maintenance and reassembly operation RELEASE the pressure in the pipes
- Do not mix paints/products of different types.
- Every product change clean perfectly the booth, the units and everything that is in contact with the product.
- Do not use recovery products deposited in the filters/ducts as they are polluted.
- For a better finish of the pieces, degrease them carefully.
- The pieces to be treated must be perfectly dry and must not have oxidation, dirt from grease, oil or other residues.
- To obtain products with good characteristics of mechanical resistance and to atmospheric agents, it is necessary to comply with the standards dictated by the manufacturers of the paint/product.

SAFETY

The use of the equipment for processes other than those indicated by the manufacturer can cause damage to the equipment and danger to the operator. The equipment is not designed for processing dangerous, explosive and/or toxic materials.

FIRE: Use powder extinguishers, which must be located near the equipment as required by LAW (Legislative Decree 81/08 safety in the company). **DO NOT USE WATER.** The personnel must be previously trained in order to know how to operate in such conditions.

CLEANING

The external surfaces of the unit must be cleaned at the end of each working day or in any case at the end of each work. This allows you to keep the unit in good condition. Keep the pipes and the pump body clean. For cleaning, the use of a soft cloth soaked in thinner or a cleaning solution is sufficient.

MAINTENANCE

Routine maintenance of the AST48 system is very simple and does not require particular interventions as the mechanical components of the system are lubrication-free. During operation, the friction of the stem on the seals can cause product leakage into the cup (when the system is new this occurs after about 30/40 hours of operation). These leaks are initially minor but, if neglected, can irreparably damage the pumping system. The leak is due to the seal pack settling.

It is important to intervene immediately by adjusting the gasket pack with the specific key supplied with the system.

NORMS FOR MAINTENANCE

- Disconnect air supply before removing any part of the unit or making any component replacements.
- Do not wear rings, watches, chains, bracelets, etc. during maintenance operations.
- Always use personal protective equipment (gloves, goggles, safety shoes).
- Use only original spare parts.
- Do not use open flames, sharp points or pins for cleaning.
- No smoking

PRESSURE DISCHARGE

When stopping the system to carry out interventions on the system or to finish work, it is mandatory to completely discharge the pressure present in the system.

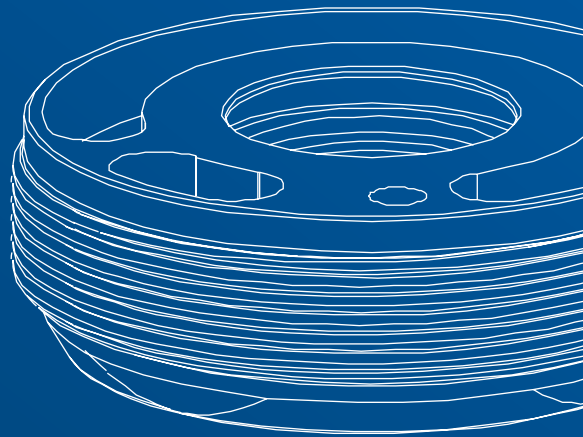
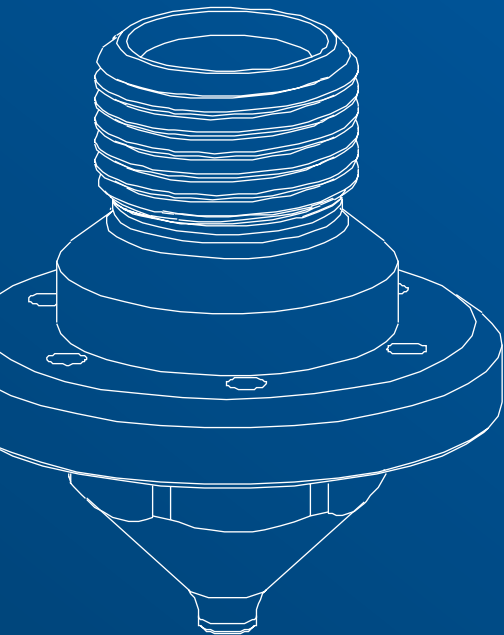
1. Close the air supply to the system.
2. Take a metal bucket, make sure it is firmly resting on the ground, keep the spray gun leaning against the wall of the bucket. Pull the lever to unload the product.
3. Unhook the coupling from the autoclave and remove the paint holder cup, then clean everything as indicated in the following paragraph.

STORING

If you do not want to use the unit for a certain period, the following operations are recommended:

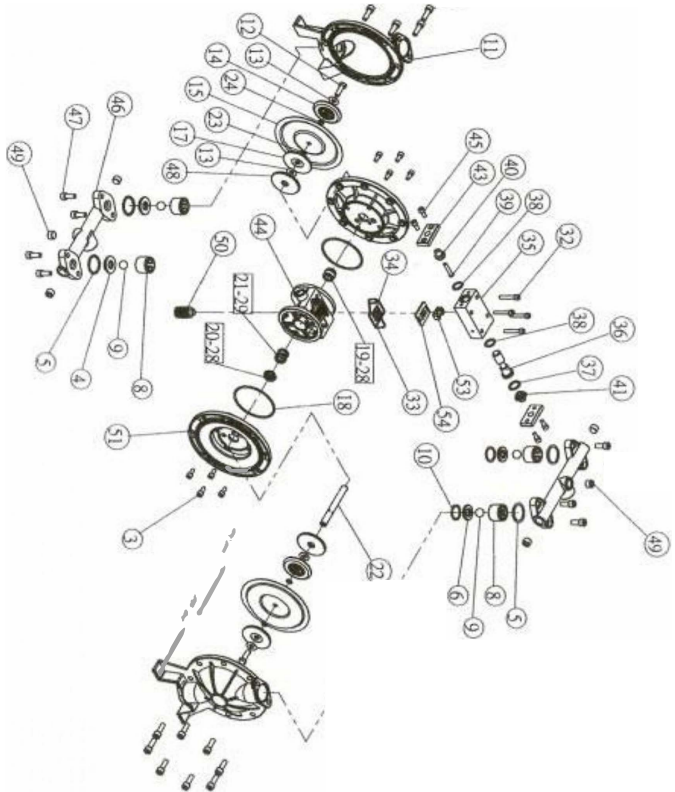
- Disconnect the unit from compressed air.
- Completely clean the equipment from any paint residues.
- Circulate some diluent in the pipes.
- Cover the unit with a waterproof sheet.
- Store the unit in a dry environment. To preserve the mechanical parts, the ambient temperature must be between 15°C and 40°C.

Spare parts and components



SPARE PARTS

- 1** Hex screws
- 3** Hex screws
- 4** Bottom valve seat
- 5** PTFE O-Rings
- 6** Upper valve seat
- 7** Top valve
- 8** Bottom valve
- 8** SUS sphere
- 10** O-Ring seal
- 11** External pump cover
- 12** Hex screws
- 13** Washer
- 14** External plate
- 15** Membrane
- 17** Internal plate
- 18** O-Ring seal
- 19** A-shaft valve
- 20** B shaft valve
- 21** Interr. post
- 22** Post
- 23** O-Ring seal
- 25** O-Ring seal
- 32** Hex screws
- 33** Exchanger gasket
- 34** Exchanger gasket
- 35** Exchanger body
- 36** Exchanger shaft
- 37** Spindle seal
- 38** Gasket
- 39** Restart piston
- 40** Air valve cap A
- 41** Air valve cap B
- 42** O-Rings
- 43** Exchanger cover
- 44** Body Pump
- 45** Hex screws
- 46** Collector
- 47** Hex screws
- 48** Spindle plate
- 49** Hex cap
- 50** Silencer
- 51** Inner lid
- 53** Valve holder
- 54** Exchanger base



DISPOSAL

If, for any reason, it is intended to put the painting unit out of service, it is necessary to observe some fundamental rules aimed at safeguarding the environment as per the provisions of the law currently in force.

Sheaths, flexible ducts, plastic or non-metallic material components must be disassembled and disposed of separately at the appropriate differentiated collection centres.

The machine DOES NOT CONTAIN POLLUTING OILS but the waste paints must in any case be disposed of at authorized consortia. Do not throw in common waste.

Do not disperse in the environment.

SUPPORT

DO YOU NEED HELP?

We are at your disposal.



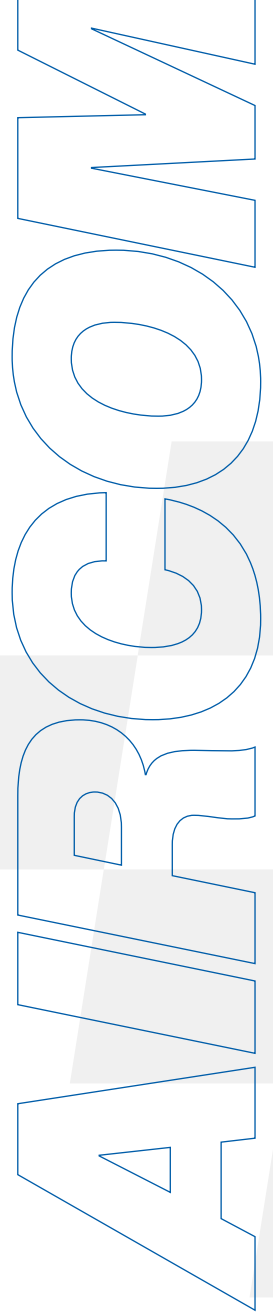
+39 0124 5154 44



aircom@aircom.it



[Online support](#)

The logo for AIRCOM features the word "AIRCOM" in a large, blue, outlined, sans-serif font. The letters are positioned vertically on the right side of the page. Behind the text is a decorative background consisting of a grid of squares in shades of light gray and white, with some squares tilted at an angle to create a dynamic, geometric pattern.

AIRCOM



DISCOVER ALL PRODUCTS



Follow us



aircom.it